

# BAJA CALIFORNIA

## ---RED FEDERAL LIBRE---

1	Ensenada - El Chinero	MEX-003
2	Ensenada - Lázaro Cárdenas	MEX-001
3	Ent. Punta Prieta - Bahía de Los Ángeles	MEX-001
4	Ent. Punta Prieta - Guerrero Negro	MEX-001
5	Lázaro Cárdenas - Ent. Punta Prieta	MEX-001
6	Mexicali - San Felipe	MEX-005
7	Ramal a Aeropuerto de Mexicali	MEX-002
8	San Felipe - Chapala	MEX-005
9	Sonoita - Mexicali	MEX-002
10	Tecate - El Sauzal	MEX-003
11	Tijuana - Ensenada (Libre)	MEX-001

## ---RED FEDERAL DE CUOTA---

12	El Centinela - La Rumorosa (Cuota)	MEX-002D
13	La Rumorosa - Tecate (Cuota)	MEX-002D
14	Libramiento de Ensenada (Cuota)	MEX-003D
15	Libramiento de Mexicali (Cuota)	MEX-002D
16	Libramiento de Tecate (Cuota)	MEX-002D
17	Tecate - Tijuana (Cuota)	MEX-002D
18	Tijuana - Ensenada (Cuota)	MEX-001D

## ---RED FEDERAL INTEGRADA POR TRAMOS LIBRES Y DE CUOTA---

19	Mexicali - Tijuana	MEX-002D-MEX
----	--------------------	--------------

## ---RED ESTATAL LIBRE---

20	Algodones - Ent. Islas Agrarias Grupo B	BC-008
21	Corredor Tijuana 2000	BC
22	Ejido Benito Juárez - Ejido Chiapas	BC-061
23	Ejido Monterrey - Mazón	BC-003
24	El Faro - Estación Coahuila	BC-004
25	Ent. Santa Rosa - Ent. Pachuca	BC-006
26	La Puerta - T. C. (Mexicali - Estación Coahuila)	BC-010
27	Mexicali - Algodones	BC-002
28	Mexicali - Estación Coahuila	BC-001
29	Mexicali - Progreso	BC-005

# 02 BAJA CALIFORNIA

ESTADOS UNIDOS DE NORTE AMÉRICA





BAJA CALIFORNIA

1 CARR: Ensenada - El Chinero

CLAVE: 02009

RUTA: MEX-003

AÑO: 2025

LUGAR	ESTACION				CLASIFICACION VEHICULAR EN PORCIENTO										COORDENADAS					
	KM	TE	SC	TDPA	M	A	B	C2	C3	T3S2	T3S3	T3S2R4	OTROS	A	B	C	K'	D	LATITUD	LONGITUD
Ensenada	0.00	3	0	14614	4.3	83.4	0.8	8.4	1.0	1.1	0.3	0.4	0.3	87.7	0.8	11.5	0.082	0.523	31.875227	-116.564915
Libramiento de Ensenada (Cuota)	9.70																			
El Tule	12.40	1	0	3509	2.3	76.4	1.2	14.4	0.3	3.6	1.7	0.1	0.0	78.7	1.2	20.1	0.083	0.524	31.887877	-116.504754
El Tule	12.40	3	0	3491	2.5	74.5	1.7	15.3	1.3	2.9	1.7	0.1	0.0	77.0	1.7	21.3	0.082	0.566	31.887929	-116.492935
Ojos Negros	38.50	1	0	2566	4.5	70.9	1.5	14.9	1.5	3.5	1.9	1.2	0.1	75.4	1.5	23.1	0.090	0.684	31.888882	-116.280550
San Salvador	60.50	1	0	1165	1.9	74.9	2.8	10.6	1.5	6.7	0.8	0.7	0.1	76.8	2.8	20.4	0.103	0.517	31.848653	-116.075749
Héroes de La Independencia	93.00	3	0	1289	1.2	81.4	2.3	7.9	0.7	4.8	1.0	0.4	0.3	82.6	2.3	15.1	0.080	0.670	31.601521	-115.874332
Leyes de Reforma	103.00	3	0	1343	2.7	77.5	1.4	11.2	1.7	4.3	0.8	0.3	0.1	80.2	1.4	18.4	0.109	0.644	31.526443	-115.812118
Lázaro Cárdenas	122.00	3	0	1338	1.9	79.9	2.8	9.8	0.9	3.5	0.8	0.3	0.1	81.8	2.8	15.4	0.098	0.595	31.377901	-115.682713
Francisco R. Serrano	137.50	3	0	681	2.2	72.7	3.0	13.2	1.0	6.2	1.3	0.3	0.1	74.9	3.0	22.1	0.081	0.582	31.328655	-115.532687
El Chinero	196.00	1	0	675	2.3	69.9	2.2	12.9	1.4	8.0	1.9	1.3	0.1	72.2	2.2	25.6	0.084	0.632	31.428477	-115.057702

2 CARR: Ensenada - Lázaro Cárdenas

CLAVE: 02098

RUTA: MEX-001

AÑO: 2025

LUGAR	ESTACION				CLASIFICACION VEHICULAR EN PORCIENTO										COORDENADAS					
	KM	TE	SC	TDPA	M	A	B	C2	C3	T3S2	T3S3	T3S2R4	OTROS	A	B	C	K'	D	LATITUD	LONGITUD
Ensenada	0.00	3	1	28632	6.2	79.9	1.0	3.6	2.0	1.6	0.7	4.0	1.0	86.1	1.0	12.9	0.057	0.515	31.817992	-116.598324
Ensenada	0.00	3	2	29975	6.1	79.9	1.1	3.7	2.0	1.7	0.6	3.9	1.0	86.0	1.1	12.9	0.058	0.515	31.817819	-116.598108
T. Der. Aeropuerto	13.50	3	1	29623	6.2	83.1	1.3	4.0	2.0	1.6	0.3	1.3	0.2	89.3	1.3	9.4	0.072	0.529	31.792555	-116.593273
T. Der. Aeropuerto	13.50	3	2	29403	6.1	82.8	1.5	4.1	2.1	1.5	0.2	1.4	0.3	88.9	1.5	9.6	0.076	0.529	31.792737	-116.593119
T. Der. La Bufadora	21.16	1	1	16131	4.5	87.5	1.0	3.0	0.8	1.9	0.4	0.6	0.3	92.0	1.0	7.0	0.082	0.511	31.731299	-116.580042
T. Der. La Bufadora	21.16	1	2	17139	4.5	87.6	1.0	3.0	0.7	1.9	0.6	0.5	0.2	92.1	1.0	6.9	0.074	0.511	31.731344	-116.579893
T. Der. La Bufadora	21.16	3	0	15381	2.2	85.3	1.7	5.9	1.1	3.0	0.4	0.3	0.1	87.5	1.7	10.8	0.080	0.529	31.700728	-116.553912
Cañón Buenavista	30.40	1	0	12467	2.4	85.2	2.2	4.4	0.9	3.8	0.4	0.6	0.1	87.6	2.2	10.2	0.085	0.559	31.677251	-116.523794
Cañón Buenavista	30.40	3	0	6944	2.8	82.0	2.1	5.1	0.8	5.3	0.9	0.8	0.2	84.8	2.1	13.1	0.104	0.740	31.666201	-116.518662
Santo Tomás	52.00	1	0	6051	2.0	81.4	3.3	4.1	1.3	5.6	1.4	0.9	0.0	83.4	3.3	13.3	0.082	0.534	31.563817	-116.415760
Misión San Vicente	90.00	1	0	5881	2.8	78.4	3.2	4.5	1.2	8.4	1.1	0.4	0.0	81.2	3.2	15.6	0.068	0.504	31.330656	-116.251814
El Salado	104.50	1	0	4478	1.6	78.1	4.7	5.2	1.0	7.5	1.3	0.5	0.1	79.7	4.7	15.6	0.075	0.506	31.223353	-116.165201
Punta Colonet	128.00	1	0	5419	1.5	80.9	4.3	4.3	0.7	7.1	0.7	0.4	0.1	82.4	4.3	13.3	0.078	0.514	31.080471	-116.204257
Punta Colonet	128.00	3	0	5706	2.3	77.2	4.6	6.6	1.5	6.5	0.7	0.4	0.2	79.5	4.6	15.9	0.078	0.565	31.053664	-116.208811
Camalú	159.00	1	0	9615	1.6	83.3	4.7	3.5	1.0	4.5	0.8	0.6	0.0	84.9	4.7	10.4	0.077	0.514	30.849705	-116.069541
Colonia Vicente Guerrero (Lázaro Cárdenas)	172.40	3	0	20882	0.8	89.6	3.5	2.6	0.8	2.1	0.3	0.3	0.0	90.4	3.5	6.1	0.074	0.508	30.700447	-115.984940
San Quintín	193.00	1	1	9034	0.9	91.6	2.4	2.4	0.8	1.4	0.2	0.2	0.1	92.5	2.4	5.1	0.076	0.515	30.583527	-115.949118
San Quintín	193.00	1	2	9107	0.9	91.3	2.5	2.4	0.9	1.5	0.2	0.2	0.1	92.2	2.5	5.3	0.082	0.515	30.583548	-115.948981
San Quintín	193.00	3	1	20500	2.9	89.2	2.3	2.8	1.2	0.8	0.1	0.4	0.3	92.1	2.3	5.6	0.078	0.540	30.531498	-115.932947

BAJA CALIFORNIA

2 CARR: Ensenada - Lázaro Cárdenas

CLAVE: 02098

RUTA: MEX-001

AÑO: 2025

LUGAR	ESTACION				CLASIFICACION VEHICULAR EN PORCIENTO										COORDENADAS					
	KM	TE	SC	TDPA	M	A	B	C2	C3	T3S2	T3S3	T3S2R4	OTROS	A	B	C	K'	D	LATITUD	LONGITUD
San Quintín	193.00	3	2	20724	3.1	88.4	2.4	2.7	1.4	1.0	0.4	0.4	0.2	91.5	2.4	6.1	0.082	0.540	30.531541	-115.932808
Lázaro Cárdenas	196.00																			

3 CARR: Ent. Punta Prieta - Bahía de Los Ángeles

CLAVE: 02322

RUTA: MEX-001

AÑO: 2025

LUGAR	ESTACION				CLASIFICACION VEHICULAR EN PORCIENTO										COORDENADAS					
	KM	TE	SC	TDPA	M	A	B	C2	C3	T3S2	T3S3	T3S2R4	OTROS	A	B	C	K'	D	LATITUD	LONGITUD
Parador Punta Prieta	0.00	3	0	185	0.4	60.9	3.7	30.8	3.1	1.1	0.0	0.0	0.0	61.3	3.7	35.0	0.162	0.800	29.045413	-114.150516
Bahía de Los Angeles	68.00	1	0	235	3.8	76.8	1.2	14.2	3.0	1.0	0.0	0.0	0.0	80.6	1.2	18.2	0.115	0.889	28.963668	-113.567554

4 CARR: Ent. Punta Prieta - Guerrero Negro

CLAVE: 00321

RUTA: MEX-001

AÑO: 2025

LUGAR	ESTACION				CLASIFICACION VEHICULAR EN PORCIENTO										COORDENADAS					
	KM	TE	SC	TDPA	M	A	B	C2	C3	T3S2	T3S3	T3S2R4	OTROS	A	B	C	K'	D	LATITUD	LONGITUD
Parador Punta Prieta	2.50	3	0	875	3.4	58.2	5.4	10.6	3.5	14.7	3.1	1.0	0.1	61.6	5.4	33.0	0.083	0.616	28.911962	-114.150384
Rosarito	52.20	3	0	942	4.3	52.6	5.4	14.1	3.2	16.1	3.8	0.4	0.1	56.9	5.4	37.7	0.108	0.559	28.629754	-114.023855
Tanatán	68.85	3	0	994	3.7	58.0	6.4	9.0	3.5	14.7	3.8	0.8	0.1	61.7	6.4	31.9	0.097	0.510	28.505507	-114.019866
Tampico	105.90	1	0	1123	2.7	66.9	3.7	5.0	3.1	15.1	2.6	0.9	0.0	69.6	3.7	26.7	0.095	0.589	28.208309	-114.000711
Lim. Edos. Term. B.C. Ppia. B.C.S. (Paralelo 28)	128.56																			

5 CARR: Lázaro Cárdenas - Ent. Punta Prieta

CLAVE: 02319

RUTA: MEX-001

AÑO: 2025

LUGAR	ESTACION				CLASIFICACION VEHICULAR EN PORCIENTO										COORDENADAS					
	KM	TE	SC	TDPA	M	A	B	C2	C3	T3S2	T3S3	T3S2R4	OTROS	A	B	C	K'	D	LATITUD	LONGITUD
Lázaro Cárdenas	0.00	3	0	14162	2.0	84.8	2.6	7.6	1.0	1.0	0.6	0.4	0.0	86.8	2.6	10.6	0.079	0.643	30.505380	-115.924770
T. Der. Ramal a Venustiano Carranza	14.50	1	0	3198	1.1	83.8	3.2	5.2	1.4	4.2	0.8	0.3	0.0	84.9	3.2	11.9	0.104	0.688	30.394054	-115.871009
Rosario de Arriba	57.00	1	0	1282	2.5	77.9	5.0	6.2	1.3	5.1	0.9	1.1	0.0	80.4	5.0	14.6	0.093	0.529	30.065908	-115.731074
Rosario de Arriba	57.00	3	0	2503	2.4	85.0	2.2	3.4	1.0	5.0	0.6	0.4	0.0	87.4	2.2	10.4	0.078	0.597	30.075454	-115.702933
T. Der. Emiliano Zapata	80.00	3	0	812	1.9	55.9	6.0	11.3	1.3	19.4	2.5	1.7	0.0	57.8	6.0	36.2	0.075	0.525	30.029299	-115.529957
San Agustín	140.00	1	0	710	4.6	57.8	4.6	5.5	1.6	21.6	2.5	1.8	0.0	62.4	4.6	33.0	0.089	0.635	29.922044	-114.981019
San Agustín	140.00	3	0	563	1.5	65.6	3.8	4.8	1.1	19.3	2.4	1.5	0.0	67.1	3.8	29.1	0.091	0.529	29.921329	-114.970479
San Luis	179.30	1	0	556	2.7	65.7	3.6	5.2	1.2	17.5	2.4	1.7	0.0	68.4	3.6	28.0	0.112	0.677	29.738980	-114.731470
Rancho Chapala	233.30	1	0	484	2.0	61.5	4.8	4.6	0.9	22.3	2.6	1.3	0.0	63.5	4.8	31.7	0.093	0.689	29.396531	-114.393960
Parador Punta Prieta	281.00	1	0	915	5.2	64.5	4.0	6.3	1.2	15.2	2.4	1.2	0.0	69.7	4.0	26.3	0.117	0.626	29.070299	-114.155199

BAJA CALIFORNIA

6 CARR: Mexicali - San Felipe

CLAVE: 02096

RUTA: MEX-005

AÑO: 2025

LUGAR	ESTACION				CLASIFICACION VEHICULAR EN PORCIENTO										COORDENADAS					
	KM	TE	SC	TDPA	M	A	B	C2	C3	T3S2	T3S3	T3S2R4	OTROS	A	B	C	K'	D	LATITUD	LONGITUD
Mexicali	0.00	3	1	15247	5.4	79.2	3.6	4.1	2.8	3.3	1.0	0.5	0.1	84.6	3.6	11.8	0.075	0.562	32.555372	-115.417806
Mexicali	0.00	3	2	14969	5.2	78.5	3.4	4.3	3.2	3.5	1.2	0.6	0.1	83.7	3.4	12.9	0.083	0.562	32.555475	-115.417539
La Puerta	32.00	1	1	4987	2.1	86.7	1.4	4.0	1.7	2.1	1.3	0.6	0.1	88.8	1.4	9.8	0.094	0.554	32.339213	-115.331593
La Puerta	32.00	1	2	5374	2.1	86.5	1.5	4.0	1.7	2.2	1.3	0.6	0.1	88.6	1.5	9.9	0.115	0.554	32.338910	-115.331389
T. Izq. Estación Coahuila	39.00	1	1	3670	1.3	86.7	1.8	3.8	1.7	2.4	1.5	0.7	0.1	88.0	1.8	10.2	0.081	0.683	32.280427	-115.322509
T. Izq. Estación Coahuila	39.00	1	2	3702	1.1	86.8	1.7	3.8	1.8	2.3	1.5	0.9	0.1	87.9	1.7	10.4	0.105	0.683	32.280420	-115.322414
T. Izq. Estación Coahuila	39.00	3	0	3851	2.6	85.9	1.7	3.3	1.3	2.8	1.4	0.4	0.6	88.5	1.7	9.8	0.106	0.600	32.267295	-115.321492
El Chinero	141.00	1	0	2170	1.4	86.5	1.9	3.6	0.4	3.9	1.8	0.5	0.0	87.9	1.9	10.2	0.109	0.814	31.441366	-115.053608
El Chinero	141.00	3	0	2197	1.7	85.8	1.6	4.4	0.4	3.7	1.8	0.5	0.1	87.5	1.6	10.9	0.102	0.728	31.424456	-115.045629
San Felipe	189.60	1	1	3778	2.0	90.0	0.8	3.1	1.9	1.2	0.7	0.2	0.1	92.0	0.8	7.2	0.104	0.587	31.039342	-114.866604
San Felipe	189.60	1	2	4059	2.0	90.2	0.8	3.0	1.8	1.1	0.8	0.2	0.1	92.2	0.8	7.0	0.082	0.587	31.039394	-114.866499

7 CARR: Ramal a Aeropuerto de Mexicali

CLAVE: 02321

RUTA: MEX-002

AÑO: 2025

LUGAR	ESTACION				CLASIFICACION VEHICULAR EN PORCIENTO										COORDENADAS					
	KM	TE	SC	TDPA	M	A	B	C2	C3	T3S2	T3S3	T3S2R4	OTROS	A	B	C	K'	D	LATITUD	LONGITUD
T. C. Mexicali - Estación Coahuila	10.00	3	0	15035	1.7	88.2	0.4	1.5	2.8	4.4	0.5	0.3	0.2	89.9	0.4	9.7	0.087	0.588	32.650460	-115.340564
Aeropuerto	19.80	1	0	9979	1.2	90.1	0.9	4.2	0.9	1.6	0.5	0.4	0.2	91.3	0.9	7.8	0.075	0.759	32.630363	-115.258530
T. C. Algodones - Islas Agrarias Grupo B	22.10																			

8 CARR: San Felipe - Chapala

CLAVE: 02503

RUTA: MEX-005

AÑO: 2025

LUGAR	ESTACION				CLASIFICACION VEHICULAR EN PORCIENTO										COORDENADAS					
	KM	TE	SC	TDPA	M	A	B	C2	C3	T3S2	T3S3	T3S2R4	OTROS	A	B	C	K'	D	LATITUD	LONGITUD
San Felipe	0.00	3	1	2470	2.2	90.9	0.9	3.3	0.6	1.7	0.3	0.1	0.0	93.1	0.9	6.0	0.114	0.567	30.997848	-114.836386
San Felipe	0.00	3	2	2255	2.5	90.8	0.8	3.2	0.6	1.8	0.2	0.1	0.0	93.3	0.8	5.9	0.110	0.567	30.997856	-114.836350
Playa Curbina	75.46	3	0	663	2.4	88.8	1.8	2.4	1.3	1.5	1.6	0.2	0.0	91.2	1.8	7.0	0.122	0.531	30.357467	-114.643897
T. C. Lazaro Cárdenas - Parador Punta Prieta	213.00																			

9 CARR: Sonoyta - Mexicali

CLAVE: 00081

RUTA: MEX-002

AÑO: 2025

LUGAR	ESTACION				CLASIFICACION VEHICULAR EN PORCIENTO										COORDENADAS					
	KM	TE	SC	TDPA	M	A	B	C2	C3	T3S2	T3S3	T3S2R4	OTROS	A	B	C	K'	D	LATITUD	LONGITUD
Sonoyta	0.00	3	0	5511	3.9	47.4	7.0	3.7	2.2	23.8	3.2	8.0	0.8	51.3	7.0	41.7	0.053	0.519	31.886709	-112.858500
Los Vidrios	58.75	3	0	4414	3.2	34.7	11.5	3.5	2.2	31.8	3.0	9.0	1.1	37.9	11.5	50.6	0.050	0.514	32.028723	-113.426808

BAJA CALIFORNIA

9 CARR: Sonoita - Mexicali

CLAVE: 00081

RUTA: MEX-002

AÑO: 2025

LUGAR	ESTACION				CLASIFICACION VEHICULAR EN PORCIENTO													COORDENADAS		
	KM	TE	SC	TDPA	M	A	B	C2	C3	T3S2	T3S3	T3S2R4	OTROS	A	B	C	K'	D	LATITUD	LONGITUD
San Luis Río Colorado	191.80	1	0	5747	3.5	50.9	7.4	3.3	2.2	22.5	2.6	6.9	0.7	54.4	7.4	38.2	0.051	0.512	32.451085	-114.675245
San Luis Río Colorado	191.80	3	1	10338	1.2	82.7	2.3	3.2	1.5	6.5	0.6	1.6	0.4	83.9	2.3	13.8	0.079	0.531	32.486961	-114.792706
San Luis Río Colorado	191.80	3	2	11295	1.3	82.7	2.4	3.1	1.5	6.4	0.5	1.7	0.4	84.0	2.4	13.6	0.076	0.531	32.486854	-114.792760
Lim. Edos. Term. Son. Ppia. B.C.	203.69																			
X. C. Mexicali - Algodones	206.78	1	1	11924	2.7	78.5	3.0	4.2	0.8	6.8	0.9	2.5	0.6	81.2	3.0	15.8	0.067	0.529	32.497872	-114.829179
X. C. Mexicali - Algodones	206.78	1	2	12410	2.6	78.8	2.9	4.4	0.8	6.7	0.9	2.5	0.4	81.4	2.9	15.7	0.071	0.529	32.497658	-114.828779
X. C. Mexicali - Algodones	206.78	3	1	10946	2.9	76.7	2.7	4.5	1.3	7.8	0.8	2.6	0.7	79.6	2.7	17.7	0.075	0.539	32.510437	-114.871176
X. C. Mexicali - Algodones	206.78	3	2	12018	3.0	76.6	2.6	4.6	1.2	8.0	0.9	2.3	0.8	79.6	2.6	17.8	0.061	0.539	32.510364	-114.871226
T. Izq. Ejido Hermosillo	214.80	3	1	7773	3.4	73.2	3.4	5.6	1.2	8.7	1.0	2.9	0.6	76.6	3.4	20.0	0.099	0.603	32.527433	-114.928442
T. Izq. Ejido Hermosillo	214.80	3	2	7849	3.3	72.8	3.5	5.5	1.4	8.6	1.3	3.1	0.5	76.1	3.5	20.4	0.085	0.603	32.527342	-114.928482
T. Izq. Ejido Tehuantepec	223.83	3	1	14811	2.1	79.5	3.2	3.3	1.4	6.9	1.1	1.9	0.6	81.6	3.2	15.2	0.072	0.511	32.554912	-115.034419
T. Izq. Ejido Tehuantepec	223.83	3	2	13498	2.0	80.3	3.1	3.2	1.2	6.8	1.0	1.8	0.6	82.3	3.1	14.6	0.079	0.511	32.554821	-115.034402
Ejido Monterrey	228.63	3	1	13392	2.2	75.1	3.3	6.2	1.2	8.1	1.0	2.3	0.6	77.3	3.3	19.4	0.063	0.513	32.551989	-115.087469
Ejido Monterrey	228.63	3	2	13001	2.1	75.9	3.2	6.1	1.1	8.0	0.9	2.2	0.5	78.0	3.2	18.8	0.069	0.513	32.551902	-115.087487
X. C. Mexicali - Estación Coahuila	242.17	1	1	12770	2.2	80.9	2.4	3.2	1.7	5.8	1.0	2.3	0.5	83.1	2.4	14.5	0.065	0.537	32.552835	-115.203071
X. C. Mexicali - Estación Coahuila	242.17	1	2	12632	1.9	81.8	2.3	3.3	1.6	5.5	0.9	2.1	0.6	83.7	2.3	14.0	0.071	0.537	32.552741	-115.203075
T. Izq. Libramiento de Mexicali (Cuota)	249.32	1	1	14380	1.4	81.6	2.6	4.1	1.0	6.5	0.8	1.5	0.5	83.0	2.6	14.4	0.066	0.561	32.554974	-115.286228
T. Izq. Libramiento de Mexicali (Cuota)	249.32	1	2	14960	1.2	81.0	2.6	4.3	1.3	6.3	1.0	1.7	0.6	82.2	2.6	15.2	0.069	0.561	32.554876	-115.286264
X. C. Mexicali - Algodones	256.47	1	1	15017	1.8	87.3	1.9	3.5	1.0	2.2	0.5	1.3	0.5	89.1	1.9	9.0	0.064	0.517	32.565178	-115.325704
X. C. Mexicali - Algodones	256.47	1	2	15118	1.7	88.3	1.6	3.7	1.2	1.8	0.3	1.0	0.4	90.0	1.6	8.4	0.064	0.517	32.565050	-115.325759
T. C. Mexicali - San Felipe	265.12																			

10 CARR: Tecate - El Sauzal

CLAVE: 02097

RUTA: MEX-003

AÑO: 2025

LUGAR	ESTACION				CLASIFICACION VEHICULAR EN PORCIENTO													COORDENADAS		
	KM	TE	SC	TDPA	M	A	B	C2	C3	T3S2	T3S3	T3S2R4	OTROS	A	B	C	K'	D	LATITUD	LONGITUD
Tecate	0.00	3	0	12223	1.9	90.0	1.4	2.5	0.8	2.1	0.4	0.7	0.2	91.9	1.4	6.7	0.098	0.535	32.539211	-116.627235
T. Der. Valle de Las Palmas	27.80	1	0	4905	2.3	86.1	1.9	2.3	1.5	3.7	0.9	1.1	0.2	88.4	1.9	9.7	0.103	0.573	32.382507	-116.613999
El Tezterazo	48.80	3	0	6132	2.5	88.4	1.5	2.4	1.6	2.2	0.7	0.4	0.3	90.9	1.5	7.6	0.080	0.572	32.287550	-116.530121
T. Izq. San Marcos	63.50	1	0	5036	2.2	85.5	1.8	2.9	1.6	3.5	1.4	1.0	0.1	87.7	1.8	10.5	0.098	0.648	32.195753	-116.488597
El Porvenir Guadalupe	74.80	3	0	7953	1.6	83.9	1.6	3.9	1.0	5.3	1.2	1.2	0.3	85.5	1.6	12.9	0.094	0.636	32.090625	-116.563391
Las Palmas	85.00	1	0	8508	2.2	84.1	1.8	4.3	1.2	3.5	0.9	1.4	0.6	86.3	1.8	11.9	0.089	0.666	32.045825	-116.597214
San Antonio de Las Minas	93.90	1	1	6363	1.5	89.5	1.1	3.2	1.1	2.1	0.5	0.7	0.3	91.0	1.1	7.9	0.081	0.570	31.985188	-116.646374
San Antonio de Las Minas	93.90	1	2	6655	1.6	89.9	1.3	3.2	0.9	2.0	0.3	0.6	0.2	91.5	1.3	7.2	0.098	0.570	31.985118	-116.646271
Libramiento de Ensenada (Cuota)	101.34																			

BAJA CALIFORNIA

10 CARR: Tecate - El Sauzal

CLAVE: 02097

RUTA: MEX-003

AÑO: 2025

LUGAR	ESTACION				CLASIFICACION VEHICULAR EN PORCIENTO													COORDENADAS		
	KM	TE	SC	TDPA	M	A	B	C2	C3	T3S2	T3S3	T3S2R4	OTROS	A	B	C	K'	D	LATITUD	LONGITUD
El Sauzal	104.53	1	1	8152	2.3	86.3	1.4	3.7	1.7	2.6	0.5	1.2	0.3	88.6	1.4	10.0	0.083	0.527	31.910905	-116.693618
El Sauzal	104.53	1	2	8369	2.2	86.8	1.4	3.6	1.7	2.6	0.3	1.2	0.2	89.0	1.4	9.6	0.103	0.527	31.910818	-116.693534

11 CARR: Tijuana - Ensenada (Libre)

CLAVE: 02099

RUTA: MEX-001

AÑO: 2025

LUGAR	ESTACION				CLASIFICACION VEHICULAR EN PORCIENTO													COORDENADAS		
	KM	TE	SC	TDPA	M	A	B	C2	C3	T3S2	T3S3	T3S2R4	OTROS	A	B	C	K'	D	LATITUD	LONGITUD
Tijuana	0.00																			
X. C. Tijuana - San Miguel (Cuota)	22.00	1	1	35271	2.6	92.0	0.7	1.2	1.1	0.9	0.3	0.8	0.4	94.6	0.7	4.7	0.073	0.529	32.381594	-117.057434
X. C. Tijuana - San Miguel (Cuota)	22.00	1	2	35179	2.8	91.6	0.6	1.5	0.9	1.0	0.2	1.2	0.2	94.4	0.6	5.0	0.058	0.529	32.381574	-117.057268
Rosarito	25.94	1	1	15880	4.2	88.0	0.8	3.4	0.9	0.7	0.1	1.4	0.5	92.2	0.8	7.0	0.068	0.538	32.368757	-117.060653
Rosarito	25.94	1	2	18799	4.3	87.2	0.7	3.7	1.1	0.9	0.2	1.6	0.3	91.5	0.7	7.8	0.063	0.538	32.368226	-117.060372
Rosarito	25.94	3	1	10527	8.0	83.3	0.7	4.2	0.9	0.8	0.3	1.4	0.4	91.3	0.7	8.0	0.087	0.533	32.336955	-117.054707
Rosarito	25.94	3	2	10862	8.2	82.7	0.8	4.5	1.2	0.9	0.2	1.2	0.3	90.9	0.8	8.3	0.081	0.533	32.336983	-117.054598
Complejo la Paloma	28.64																			
T. Izq. Aut. Tijuana - San Miguel	46.12	1	1	7867	1.5	92.9	0.5	2.4	1.2	0.6	0.5	0.3	0.1	94.4	0.5	5.1	0.101	0.558	32.229800	-116.921578
T. Izq. Aut. Tijuana - San Miguel	46.12	1	2	6778	1.6	92.7	0.6	2.4	1.2	0.7	0.4	0.3	0.1	94.3	0.6	5.1	0.097	0.558	32.229839	-116.921471
Población Plaza Santa María	56.98	1	0	2547	2.4	94.0	0.1	3.0	0.4	0.1	0.0	0.0	0.0	96.4	0.1	3.5	0.114	0.593	32.144927	-116.892371
La Misión	64.98	1	0	5410	2.2	94.0	0.8	2.2	0.7	0.1	0.0	0.0	0.0	96.2	0.8	3.0	0.096	0.520	32.092970	-116.859680
T. Izq. Colonia Guadalupe	82.90	1	0	3236	1.9	93.7	0.6	3.5	0.3	0.0	0.0	0.0	0.0	95.6	0.6	3.8	0.126	0.659	31.989615	-116.746474
Ent. San Miguel	95.80	1	0	2459	0.8	95.1	0.8	2.7	0.4	0.2	0.0	0.0	0.0	95.9	0.8	3.3	0.122	0.693	31.913677	-116.731196
El Sauzal	102.00	1	1	15102	1.8	84.6	2.1	3.4	1.2	5.3	0.4	0.9	0.3	86.4	2.1	11.5	0.083	0.559	31.900627	-116.710111
El Sauzal	102.00	1	2	14938	1.9	84.4	2.0	3.4	1.3	5.4	0.5	0.8	0.3	86.3	2.0	11.7	0.068	0.559	31.900697	-116.710062
El Sauzal	102.00	3	1	24853	3.0	85.1	2.0	5.3	1.1	2.0	0.3	1.0	0.2	88.1	2.0	9.9	0.092	0.604	31.868935	-116.674704
El Sauzal	102.00	3	2	22583	2.9	84.9	2.0	5.3	0.9	2.3	0.3	1.0	0.4	87.8	2.0	10.2	0.074	0.604	31.869019	-116.674634
Ensenada	110.00																			

12 CARR: El Centinela - La Rumorosa (Cuota)

CLAVE: 02011

RUTA: MEX-002D

AÑO: 2025

LUGAR	ESTACION				CLASIFICACION VEHICULAR EN PORCIENTO													COORDENADAS		
	KM	TE	SC	TDPA	M	A	B	C2	C3	T3S2	T3S3	T3S2R4	OTROS	A	B	C	K'	D	LATITUD	LONGITUD
Ent. El Centinela	20.30																			
Laguna Salada	25.00	1	1	7258	2.6	75.4	3.0	4.0	1.6	9.2	1.5	2.1	0.6	78.0	3.0	19.0	0.090	0.699	32.576874	-115.740039
Laguna Salada	25.00	1	2	7514	2.7	75.0	3.1	4.2	1.4	9.0	1.7	2.0	0.9	77.7	3.1	19.2	0.108	0.699	32.576792	-115.740023
La Rumorosa	67.60	1	1	2684	3.8	75.7	1.9	4.0	1.6	9.7	1.5	1.6	0.2	79.5	1.9	18.6	0.112	0.752	32.551015	-116.043372

BAJA CALIFORNIA

12 CARR: El Centinela - La Rumorosa (Cuota)

CLAVE: 02011

RUTA: MEX-002D

AÑO: 2025

LUGAR	ESTACION				CLASIFICACION VEHICULAR EN PORCIENTO														COORDENADAS	
	KM	TE	SC	TDPA	M	A	B	C2	C3	T3S2	T3S3	T3S2R4	OTROS	A	B	C	K'	D	LATITUD	LONGITUD
La Rumorosa	67.60	1	2	2956	3.6	75.7	1.9	3.9	1.9	9.7	1.8	1.2	0.3	79.3	1.9	18.8	0.156	0.752	32.550921	-116.043376

13 CARR: La Rumorosa - Tecate (Cuota)

CLAVE: 02011

RUTA: MEX-002D

AÑO: 2025

LUGAR	ESTACION				CLASIFICACION VEHICULAR EN PORCIENTO														COORDENADAS	
	KM	TE	SC	TDPA	M	A	B	C2	C3	T3S2	T3S3	T3S2R4	OTROS	A	B	C	K'	D	LATITUD	LONGITUD
La Rumorosa	62.00	3	1	5066	2.3	69.1	3.9	4.2	1.2	13.3	1.6	3.6	0.8	71.4	3.9	24.7	0.099	0.685	32.549024	-116.066448
La Rumorosa	62.00	3	2	4959	2.0	69.6	3.8	4.1	1.4	13.4	1.5	3.4	0.8	71.6	3.8	24.6	0.084	0.685	32.548999	-116.066347
Plaza de Cobro El Hongo	92.00	1	1	5654	3.1	68.0	5.5	4.8	1.1	11.1	1.1	4.5	0.8	71.1	5.5	23.4	0.078	0.547	32.518113	-116.298812
Plaza de Cobro El Hongo	92.00	1	2	5378	3.0	68.4	5.5	4.7	1.1	11.0	1.1	4.5	0.7	71.4	5.5	23.1	0.083	0.547	32.518035	-116.298841
Plaza de Cobro El Hongo	92.00	2	1	4713	0.3	71.2	2.8	3.3	1.5	15.3	0.8	3.8	1.0	71.5	2.8	25.7	0.087	0.500	32.521843	-116.320010
Plaza de Cobro El Hongo	92.00	2	2	4713	0.3	71.2	2.8	3.3	1.5	15.3	0.8	3.8	1.0	71.5	2.8	25.7	0.087	0.500	32.521843	-116.320010
Plaza de Cobro El Hongo	92.00	3	1	6198	1.9	74.6	4.0	3.3	1.3	9.3	1.4	3.3	0.9	76.5	4.0	19.5	0.085	0.640	32.523964	-116.331822
Plaza de Cobro El Hongo	92.00	3	2	6367	2.1	75.0	4.3	3.2	1.1	8.9	1.2	3.3	0.9	77.1	4.3	18.6	0.109	0.640	32.523887	-116.331854
T. C. Mexicali - Tijuana (Libre)	117.00																			

14 CARR: Libramiento de Ensenada (Cuota)

CLAVE:

RUTA: MEX-003D

AÑO: 2025

LUGAR	ESTACION				CLASIFICACION VEHICULAR EN PORCIENTO														COORDENADAS	
	KM	TE	SC	TDPA	M	A	B	C2	C3	T3S2	T3S3	T3S2R4	OTROS	A	B	C	K'	D	LATITUD	LONGITUD
T. C Tecate - El Sauzal	0.00	3	0	7963	1.7	90.4	0.9	3.7	1.6	1.6	0.1	0.0	0.0	92.1	0.9	7.0	0.097	0.546	31.903566	-116.672047
T. C. Ensenada - El Chinero	22.30	1	0	3310	2.5	84.4	1.3	3.0	2.8	4.7	0.7	0.4	0.2	86.9	1.3	11.8	0.086	0.514	31.882668	-116.527786

15 CARR: Libramiento de Mexicali (Cuota)

CLAVE: 02319

RUTA: MEX-002D

AÑO: 2025

LUGAR	ESTACION				CLASIFICACION VEHICULAR EN PORCIENTO														COORDENADAS	
	KM	TE	SC	TDPA	M	A	B	C2	C3	T3S2	T3S3	T3S2R4	OTROS	A	B	C	K'	D	LATITUD	LONGITUD
T. C. Sonoita - Mexicali	0.00	3	0	5992	2.7	58.5	4.9	4.0	2.5	18.6	2.1	5.4	1.3	61.2	4.9	33.9	0.072	0.524	32.551098	-115.306435
T. C. Mexicali - Tijuana	40.60	1	0	4102	3.3	47.1	5.1	7.4	3.4	21.2	3.8	7.5	1.2	50.4	5.1	44.5	0.069	0.601	32.586002	-115.666314

16 CARR: Libramiento de Tecate (Cuota)

CLAVE: 02082

RUTA: MEX-002D

AÑO: 2025

LUGAR	ESTACION				CLASIFICACION VEHICULAR EN PORCIENTO														COORDENADAS	
	KM	TE	SC	TDPA	M	A	B	C2	C3	T3S2	T3S3	T3S2R4	OTROS	A	B	C	K'	D	LATITUD	LONGITUD
T. Der. Mexicali (1er. Acceso)	118.00	3	1	6629	3.3	74.9	3.4	2.7	1.6	8.8	1.3	3.2	0.8	78.2	3.4	18.4	0.095	0.516	32.556648	-116.584061

BAJA CALIFORNIA

16 CARR: Libramiento de Tecate (Cuota)

CLAVE: 02082

RUTA: MEX-002D

AÑO: 2025

LUGAR	ESTACION				CLASIFICACION VEHICULAR EN PORCIENTO													COORDENADAS		
	KM	TE	SC	TDPA	M	A	B	C2	C3	T3S2	T3S3	T3S2R4	OTROS	A	B	C	K'	D	LATITUD	LONGITUD
T. Der. Mexicali (1er. Acceso)	118.00	3	2	6978	3.2	75.8	3.3	2.5	1.5	8.8	1.2	2.9	0.8	79.0	3.3	17.7	0.095	0.516	32.556499	-116.584052
X. C. Tecate - El Sauzal	122.85	3	1	5601	2.6	76.7	4.7	3.1	1.9	6.7	1.0	2.6	0.7	79.3	4.7	16.0	0.094	0.572	32.551143	-116.625874
X. C. Tecate - El Sauzal	122.85	3	2	6118	2.7	76.6	4.8	3.0	1.9	6.9	1.1	2.4	0.6	79.3	4.8	15.9	0.099	0.572	32.551001	-116.625888
T. C. Mexicali - Tijuana (Libre) Poniente	130.60																			

17 CARR: Tecate - Tijuana (Cuota)

CLAVE: 02011

RUTA: MEX-002D

AÑO: 2025

LUGAR	ESTACION				CLASIFICACION VEHICULAR EN PORCIENTO													COORDENADAS		
	KM	TE	SC	TDPA	M	A	B	C2	C3	T3S2	T3S3	T3S2R4	OTROS	A	B	C	K'	D	LATITUD	LONGITUD
T. C. Mexicali - Tijuana (Libre)	130.60																			
X. C. Mexicali - Tijuana	131.10	3	1	5662	3.5	71.2	3.2	2.9	1.3	14.2	0.8	2.5	0.4	74.7	3.2	22.1	0.099	0.551	32.526408	-116.696528
X. C. Mexicali - Tijuana	131.10	3	2	5439	3.8	71.1	3.6	2.6	1.0	14.0	1.1	2.2	0.6	74.9	3.6	21.5	0.108	0.551	32.526330	-116.696518
Plaza de Cobro Tijuana	147.60	1	1	5859	2.6	72.2	3.5	3.9	1.4	11.0	1.2	3.4	0.8	74.8	3.5	21.7	0.089	0.553	32.548755	-116.848480
Plaza de Cobro Tijuana	147.60	1	2	5521	3.0	72.5	3.4	3.7	1.5	10.9	1.4	3.0	0.6	75.5	3.4	21.1	0.110	0.553	32.548672	-116.848455
Plaza de Cobro Tijuana	147.60	2	1	5176	0.5	76.6	1.4	4.1	1.8	11.7	0.6	2.5	0.8	77.1	1.4	21.5	0.091	0.500	32.545717	-116.852059
Plaza de Cobro Tijuana	147.60	2	2	5176	0.5	76.6	1.4	4.1	1.8	11.7	0.6	2.5	0.8	77.1	1.4	21.5	0.091	0.500	32.545717	-116.852059
Plaza de Cobro Tijuana	147.60	3	1	32483	2.3	83.1	3.0	3.8	1.3	5.0	0.5	0.8	0.2	85.4	3.0	11.6	0.082	0.643	32.542345	-116.859737
Plaza de Cobro Tijuana	147.60	3	2	33254	2.1	82.7	3.2	4.0	1.5	4.8	0.7	0.8	0.2	84.8	3.2	12.0	0.092	0.643	32.542267	-116.859744
Termina Autopista Principia Tijuana	148.15																			

18 CARR: Tijuana - Ensenada (Cuota)

CLAVE: 02100

RUTA: MEX-001D

AÑO: 2025

LUGAR	ESTACION				CLASIFICACION VEHICULAR EN PORCIENTO													COORDENADAS		
	KM	TE	SC	TDPA	M	A	B	C2	C3	T3S2	T3S3	T3S2R4	OTROS	A	B	C	K'	D	LATITUD	LONGITUD
Tijuana	0.00																			
T. Der. Playas de Tijuana	7.50	3	1	13814	1.5	93.5	0.5	3.7	0.5	0.3	0.0	0.0	0.0	95.0	0.5	4.5	0.091	0.602	32.528934	-117.108291
T. Der. Playas de Tijuana	7.50	3	2	13485	1.6	93.4	0.4	3.5	0.6	0.5	0.0	0.0	0.0	95.0	0.4	4.6	0.106	0.602	32.528947	-117.108198
Plaza de Cobro Playas de Tijuana	9.70	2	1	11054	1.2	97.2	0.4	0.5	0.3	0.3	0.1	0.0	0.0	98.4	0.4	1.2	0.100	0.500	32.514051	-117.109566
Plaza de Cobro Playas de Tijuana	9.70	2	2	11054	1.2	97.2	0.4	0.5	0.3	0.3	0.1	0.0	0.0	98.4	0.4	1.2	0.100	0.500	32.514051	-117.109566
T. Izq. La Joya	14.50	3	1	12591	1.5	96.4	0.4	0.7	0.3	0.5	0.1	0.1	0.0	97.9	0.4	1.7	0.087	0.575	32.481375	-117.120700
T. Izq. La Joya	14.50	3	2	13700	1.7	95.2	0.6	1.1	0.5	0.7	0.1	0.1	0.0	96.9	0.6	2.5	0.098	0.575	32.481397	-117.120618
San Antonio Norte	17.80	1	1	12884	1.2	96.2	0.6	1.0	0.6	0.3	0.1	0.0	0.0	97.4	0.6	2.0	0.094	0.742	32.459064	-117.113739
San Antonio Norte	17.80	1	2	13775	1.4	96.0	0.4	1.1	0.8	0.2	0.1	0.0	0.0	97.4	0.4	2.2	0.108	0.742	32.459085	-117.113649
San Antonio del Mar	19.30	1	1	13573	1.6	95.8	0.4	1.3	0.6	0.2	0.1	0.0	0.0	97.4	0.4	2.2	0.079	0.619	32.448096	-117.105750
San Antonio del Mar	19.30	1	2	13539	1.8	95.3	0.6	1.5	0.5	0.2	0.1	0.0	0.0	97.1	0.6	2.3	0.089	0.619	32.448151	-117.105679

BAJA CALIFORNIA

18 CARR: Tijuana - Ensenada (Cuota)

CLAVE: 02100

RUTA: MEX-001D

AÑO: 2025

LUGAR	ESTACION				CLASIFICACION VEHICULAR EN PORCIENTO										COORDENADAS					
	KM	TE	SC	TDPA	M	A	B	C2	C3	T3S2	T3S3	T3S2R4	OTROS	A	B	C	K'	D	LATITUD	LONGITUD
Brisas del Mar	22.00	1	1	15695	1.1	96.3	0.6	1.3	0.4	0.3	0.0	0.0	0.0	97.4	0.6	2.0	0.083	0.608	32.428075	-117.097126
Brisas del Mar	22.00	1	2	16048	1.3	95.8	0.3	1.6	0.6	0.4	0.0	0.0	0.0	97.1	0.3	2.6	0.087	0.608	32.428101	-117.097035
Baja Malibu	22.50	3	1	18683	1.0	95.9	0.5	1.9	0.5	0.2	0.0	0.0	0.0	96.9	0.5	2.6	0.090	0.590	32.416905	-117.094149
Baja Malibu	22.50	3	2	16383	1.3	95.4	0.7	1.7	0.6	0.3	0.0	0.0	0.0	96.7	0.7	2.6	0.095	0.590	32.416920	-117.094059
T. Izq. Rancho del Mar	24.60	1	1	16881	1.1	96.1	0.2	1.8	0.5	0.3	0.0	0.0	0.0	97.2	0.2	2.6	0.082	0.592	32.405133	-117.090906
T. Izq. Rancho del Mar	24.60	1	2	16143	1.3	95.4	0.3	2.0	0.6	0.4	0.0	0.0	0.0	96.7	0.3	3.0	0.095	0.592	32.405151	-117.090812
T. Izq. Rancho del Mar	24.60	3	1	16856	1.1	96.8	0.3	1.0	0.5	0.3	0.0	0.0	0.0	97.9	0.3	1.8	0.088	0.592	32.391594	-117.084584
T. Izq. Rancho del Mar	24.60	3	2	17596	1.3	96.2	0.6	0.9	0.7	0.3	0.0	0.0	0.0	97.5	0.6	1.9	0.077	0.592	32.391636	-117.084504
X. C. Tijuana - Ensenada	29.50	1	1	13600	1.2	94.5	0.3	2.8	0.6	0.4	0.1	0.1	0.0	95.7	0.3	4.0	0.095	0.570	32.380919	-117.057816
X. C. Tijuana - Ensenada	29.50	1	2	14361	1.5	93.7	0.6	2.8	0.7	0.5	0.1	0.1	0.0	95.2	0.6	4.2	0.076	0.570	32.380790	-117.057732
X. C. Tijuana - Ensenada	29.50	3	1	26564	3.0	91.2	0.8	2.8	0.9	0.8	0.1	0.3	0.1	94.2	0.8	5.0	0.091	0.547	32.370825	-117.057835
X. C. Tijuana - Ensenada	29.50	3	2	25717	2.8	90.9	0.7	2.6	0.9	1.2	0.2	0.6	0.1	93.7	0.7	5.6	0.081	0.547	32.370834	-117.057743
T. Izq. Rosarito	30.60	3	1	41974	1.4	91.7	1.3	2.5	0.9	1.1	0.2	0.6	0.3	93.1	1.3	5.6	0.068	0.598	32.360815	-117.055976
T. Izq. Rosarito	30.60	3	2	39029	1.5	91.8	1.1	2.7	1.2	0.9	0.3	0.3	0.2	93.3	1.1	5.6	0.060	0.598	32.360924	-117.055905
Plaza de Cobro Rosarito	35.43	2	1	7281	0.7	93.0	1.5	1.5	0.4	2.3	0.1	0.4	0.1	93.7	1.5	4.8	0.100	0.500	32.311096	-117.044403
Plaza de Cobro Rosarito	35.43	2	2	7281	0.7	93.0	1.5	1.5	0.4	2.3	0.1	0.4	0.1	93.7	1.5	4.8	0.100	0.500	32.311096	-117.044403
T. Izq. Corredor Tijuana 2000	40.00	3	1	9689	2.4	84.7	2.1	2.6	0.5	6.3	0.3	0.8	0.3	87.1	2.1	10.8	0.126	0.608	32.272776	-117.024079
T. Izq. Corredor Tijuana 2000	40.00	3	2	10595	2.1	85.3	1.9	2.2	0.5	6.5	0.5	0.6	0.4	87.4	1.9	10.7	0.115	0.608	32.276287	-117.026240
T. Der. Puerto Nuevo	49.27	3	1	10370	2.1	84.4	1.8	2.9	0.7	6.4	0.3	1.1	0.3	86.5	1.8	11.7	0.098	0.661	32.248936	-116.940348
T. Der. Puerto Nuevo	49.27	3	2	12078	2.2	84.0	1.9	2.9	0.8	6.5	0.3	1.0	0.4	86.2	1.9	11.9	0.104	0.661	32.250259	-116.943315
T. Der. Cantamar	53.00	3	1	11149	1.9	84.5	1.8	3.0	0.7	6.5	0.3	1.1	0.2	86.4	1.8	11.8	0.093	0.636	32.224640	-116.917263
T. Der. Cantamar	53.00	3	2	12686	2.4	84.0	1.9	3.0	1.1	6.0	0.4	1.0	0.2	86.4	1.9	11.7	0.101	0.636	32.224731	-116.917119
T. Izq. El Descanso	55.40	3	1	9892	2.2	85.3	2.1	3.3	0.8	5.0	0.4	0.7	0.2	87.5	2.1	10.4	0.135	0.519	32.204015	-116.910141
T. Izq. El Descanso	55.40	3	2	9996	1.8	85.4	2.2	3.2	0.9	5.0	0.4	0.8	0.3	87.2	2.2	10.6	0.132	0.519	32.203958	-116.909979
T. Der. Campo López	58.30	3	1	8923	1.9	86.0	1.8	3.2	0.8	5.1	0.2	0.9	0.1	87.9	1.8	10.3	0.141	0.520	32.171041	-116.903870
T. Der. Campo López	58.30	3	2	9378	2.0	85.3	1.9	3.7	0.7	5.0	0.3	0.9	0.2	87.3	1.9	10.8	0.134	0.520	32.177175	-116.906232
T. Der. La Misión	66.44	3	1	10342	1.9	84.9	1.0	4.8	0.7	5.5	0.2	0.8	0.2	86.8	1.0	12.2	0.107	0.514	32.119041	-116.884137
T. Der. La Misión	66.44	3	2	9904	2.2	84.2	1.2	4.8	0.9	5.5	0.2	0.8	0.2	86.4	1.2	12.4	0.111	0.514	32.120070	-116.883921
T. Der. La Salina	72.85	1	1	10813	2.3	84.5	1.9	3.4	1.0	5.1	0.3	1.2	0.3	86.8	1.9	11.3	0.095	0.521	32.064092	-116.877555
T. Der. La Salina	72.85	1	2	10480	2.1	85.6	1.8	3.3	0.9	5.1	0.2	0.8	0.2	87.7	1.8	10.5	0.097	0.521	32.064462	-116.877400
T. Der. La Salina	72.85	3	1	8919	2.4	82.3	2.3	5.5	1.2	4.5	0.5	1.0	0.3	84.7	2.3	13.0	0.107	0.511	32.054355	-116.877253
T. Der. La Salina	72.85	3	2	8617	2.6	82.8	2.1	5.6	0.8	4.4	0.4	1.0	0.3	85.4	2.1	12.5	0.106	0.511	32.054329	-116.877088
T. Der. Baja Mar	77.60	3	1	8878	1.9	83.6	2.0	4.2	1.2	5.2	0.6	1.0	0.3	85.5	2.0	12.5	0.107	0.625	32.016794	-116.855673
T. Der. Baja Mar	77.60	3	2	8926	1.8	82.7	2.0	4.3	1.3	5.2	0.9	1.4	0.4	84.5	2.0	13.5	0.102	0.625	32.018190	-116.856748
Plaza de Cobro Ensenada	98.60	2	1	8282	0.5	85.9	2.7	2.4	0.8	6.2	0.2	1.2	0.1	86.4	2.7	10.9	0.100	0.500	31.903097	-116.732777

BAJA CALIFORNIA

18 CARR: Tijuana - Ensenada (Cuota)

CLAVE: 02100

RUTA: MEX-001D

AÑO: 2025

LUGAR	ESTACION				CLASIFICACION VEHICULAR EN PORCIENTO														COORDENADAS	
	KM	TE	SC	TDPA	M	A	B	C2	C3	T3S2	T3S3	T3S2R4	OTROS	A	B	C	K'	D	LATITUD	LONGITUD
Plaza de Cobro Ensenada	98.60	2	2	8282	0.5	85.9	2.7	2.4	0.8	6.2	0.2	1.2	0.1	86.4	2.7	10.9	0.100	0.500	31.903097	-116.732777
T. C. Tijuana - Ensenada (Libre)	98.80																			

19 CARR: Mexicali - Tijuana

CLAVE: 02082

RUTA: MEX-002D-MEX

AÑO: 2025

LUGAR	ESTACION				CLASIFICACION VEHICULAR EN PORCIENTO														COORDENADAS	
	KM	TE	SC	TDPA	M	A	B	C2	C3	T3S2	T3S3	T3S2R4	OTROS	A	B	C	K'	D	LATITUD	LONGITUD
Mexicali	0.00																			
Colonia Progreso	7.80	3	1	6545	2.3	79.9	2.6	3.9	2.3	6.3	0.9	1.3	0.5	82.2	2.6	15.2	0.081	0.587	32.583877	-115.590907
Colonia Progreso	7.80	3	2	6945	2.3	79.9	2.6	3.9	2.3	6.2	1.0	1.3	0.5	82.2	2.6	15.2	0.120	0.587	32.583743	-115.590987
La Rumorosa	66.80																			
T. Der. Estación de Microondas	69.62	3	0	3153	1.9	74.2	2.2	2.7	1.3	14.6	2.4	0.4	0.3	76.1	2.2	21.7	0.101	0.724	32.510100	-116.090672
Agua Hechicera	87.00	1	0	3037	1.9	74.2	2.1	3.0	1.6	14.7	2.0	0.3	0.2	76.1	2.1	21.8	0.101	0.601	32.495591	-116.220838
El Encinal	112.15	1	0	6691	2.0	82.4	1.6	3.2	1.1	7.4	1.2	0.9	0.2	84.4	1.6	14.0	0.086	0.579	32.555662	-116.436818
Tecate	132.00	1	1	8265	1.6	85.5	2.4	4.9	0.7	3.5	0.5	0.5	0.4	87.1	2.4	10.5	0.076	0.558	32.563735	-116.579828
Tecate	132.00	1	2	8748	1.5	85.9	2.2	4.7	0.9	3.3	0.4	0.7	0.4	87.4	2.2	10.4	0.083	0.558	32.563634	-116.579917
Tecate	132.00	3	1	12857	1.3	88.4	2.3	3.1	1.5	2.2	0.6	0.4	0.2	89.7	2.3	8.0	0.070	0.578	32.547787	-116.672720
Tecate	132.00	3	2	13111	1.1	88.3	2.6	3.4	1.7	2.0	0.5	0.2	0.2	89.4	2.6	8.0	0.084	0.578	32.547747	-116.672540
Presa Abelardo L. Rodríguez	165.00	3	0	11822	1.3	91.9	1.3	2.9	1.0	0.7	0.3	0.3	0.3	93.2	1.3	5.5	0.070	0.530	32.455209	-116.915161
Tijuana	182.60																			

20 CARR: Algodones - Ent. Islas Agrarias Grupo B

CLAVE: 02006

RUTA: BC-008

AÑO: 2025

LUGAR	ESTACION				CLASIFICACION VEHICULAR EN PORCIENTO														COORDENADAS	
	KM	TE	SC	TDPA	M	A	B	C2	C3	T3S2	T3S3	T3S2R4	OTROS	A	B	C	K'	D	LATITUD	LONGITUD
Algodones	0.00	3	0	5356	2.4	94.2	0.3	1.7	0.4	0.1	0.0	0.0	0.9	96.6	0.3	3.1	0.088	0.732	32.702952	-114.742245
T. Izq. Cd. Morelos	14.00	1	0	4818	1.2	94.4	0.8	2.2	0.9	0.3	0.1	0.1	0.0	95.6	0.8	3.6	0.083	0.671	32.665967	-114.838117
Mérida	20.30	3	0	2285	1.4	92.2	1.3	3.6	0.5	0.5	0.4	0.1	0.0	93.6	1.3	5.1	0.084	0.651	32.663664	-114.933238
T. Izq. Ejido Lazáro Cárdenas	31.50	1	0	3383	1.0	94.9	0.5	2.4	0.4	0.4	0.3	0.1	0.0	95.9	0.5	3.6	0.076	0.638	32.614519	-115.015451
Islas Agrarias Grupo B	55.50	1	0	5817	2.0	83.8	1.2	8.4	1.3	2.4	0.3	0.6	0.0	85.8	1.2	13.0	0.086	0.587	32.615480	-115.264571

BAJA CALIFORNIA

21 CARR: Corredor Tijuana 2000

CLAVE: 02006

RUTA: BC

AÑO: 2025

LUGAR	ESTACION				CLASIFICACION VEHICULAR EN PORCIENTO													COORDENADAS		
	KM	TE	SC	TDPA	M	A	B	C2	C3	T3S2	T3S3	T3S2R4	OTROS	A	B	C	K'	D	LATITUD	LONGITUD
T. C. Mexicali - Tijuana (Cuota)	0.00	3	1	32870	3.3	83.9	2.8	3.6	1.1	3.4	0.5	0.9	0.5	87.2	2.8	10.0	0.074	0.640	32.539247	-116.856316
T. C. Mexicali - Tijuana (Cuota)	0.00	3	2	30740	2.7	84.8	3.3	4.0	0.8	3.2	0.3	0.7	0.2	87.5	3.3	9.2	0.071	0.640	32.539117	-116.856073
T. C. Mexicali - Tijuana	11.00	1	1	53047	5.3	81.0	3.0	4.4	1.9	2.7	0.3	0.8	0.6	86.3	3.0	10.7	0.057	0.541	32.459303	-116.839310
T. C. Mexicali - Tijuana	11.00	1	2	51237	5.1	80.3	2.8	4.6	2.0	2.8	0.5	1.2	0.7	85.4	2.8	11.8	0.058	0.541	32.459558	-116.839179
T. C. Tijuana - San Miguel (Cuota)	40.00	1	1	7510	2.5	82.3	1.9	3.4	2.0	5.6	0.8	1.0	0.5	84.8	1.9	13.3	0.122	0.620	32.288759	-117.022087
T. C. Tijuana - San Miguel (Cuota)	40.00	1	2	6954	2.5	81.7	2.0	3.2	2.2	5.8	0.8	1.4	0.4	84.2	2.0	13.8	0.149	0.620	32.288626	-117.022034

22 CARR: Ejido Benito Juárez - Ejido Chiapas

CLAVE: 02501

RUTA: BC-061

AÑO: 2025

LUGAR	ESTACION				CLASIFICACION VEHICULAR EN PORCIENTO													COORDENADAS		
	KM	TE	SC	TDPA	M	A	B	C2	C3	T3S2	T3S3	T3S2R4	OTROS	A	B	C	K'	D	LATITUD	LONGITUD
Ejido Benito Juárez	0.00	3	0	3934	1.4	94.3	0.3	3.4	0.5	0.1	0.0	0.0	0.0	95.7	0.3	4.0	0.111	0.553	32.559421	-114.993039
Ejido México	7.00	1	0	1694	1.5	93.5	0.9	2.8	0.5	0.4	0.2	0.1	0.1	95.0	0.9	4.1	0.077	0.573	32.519782	-114.980239
Ejido Chiapas	10.56	1	0	1230	1.7	93.4	1.3	2.6	0.8	0.1	0.1	0.0	0.0	95.1	1.3	3.6	0.078	0.615	32.499505	-114.968095

23 CARR: Ejido Monterrey - Mazón

CLAVE: 02004

RUTA: BC-003

AÑO: 2025

LUGAR	ESTACION				CLASIFICACION VEHICULAR EN PORCIENTO													COORDENADAS		
	KM	TE	SC	TDPA	M	A	B	C2	C3	T3S2	T3S3	T3S2R4	OTROS	A	B	C	K'	D	LATITUD	LONGITUD
T. C. Sonoita - Mexicali	0.00	3	0	8239	1.2	82.6	2.5	8.4	1.2	2.6	0.6	0.8	0.1	83.8	2.5	13.7	0.067	0.643	32.543084	-115.076376
X. C. Mexicali - Algodones	15.16	1	0	6698	1.7	88.2	1.8	4.0	1.4	2.0	0.6	0.2	0.1	89.9	1.8	8.3	0.072	0.550	32.422705	-115.067438
X. C. Mexicali - Algodones	15.16	3	0	9837	2.4	85.2	1.8	5.8	1.0	2.0	0.7	0.9	0.2	87.6	1.8	10.6	0.091	0.521	32.416931	-115.067191
Guadalupe Victoria	30.47	1	0	11599	1.6	93.1	1.3	2.3	0.6	0.5	0.4	0.1	0.1	94.7	1.3	4.0	0.091	0.500	32.295034	-115.088987
Mazón	35.00	1	0	8643	1.5	92.3	1.2	3.3	0.5	0.7	0.3	0.2	0.0	93.8	1.2	5.0	0.081	0.558	32.242434	-115.111057

24 CARR: El Faro - Estación Coahuila

CLAVE: 02013

RUTA: BC-004

AÑO: 2025

LUGAR	ESTACION				CLASIFICACION VEHICULAR EN PORCIENTO													COORDENADAS		
	KM	TE	SC	TDPA	M	A	B	C2	C3	T3S2	T3S3	T3S2R4	OTROS	A	B	C	K'	D	LATITUD	LONGITUD
T. C. Mexicali - San Felipe	0.00	3	0	4605	1.0	87.8	1.6	3.9	1.3	2.9	1.3	0.2	0.0	88.8	1.6	9.6	0.090	0.519	32.273419	-115.317639
X. C. Mexicali - Estación Coahuila	16.30	1	0	4535	1.1	81.4	0.8	11.9	0.9	2.7	0.8	0.3	0.1	82.5	0.8	16.7	0.079	0.521	32.239530	-115.179369
X. C. Mexicali - Estación Coahuila	16.30	3	0	10080	3.7	89.8	1.8	2.7	0.5	1.0	0.3	0.2	0.0	93.5	1.8	4.7	0.062	0.525	32.239425	-115.158428
T. Izq. Carr. Ejido Monterrey - Mazón	26.70	3	0	6335	2.4	88.3	1.3	4.3	0.9	1.4	0.8	0.5	0.1	90.7	1.3	8.0	0.067	0.559	32.239449	-115.100369
Francisco Murguía	30.00	3	0	5204	1.8	84.5	2.5	8.5	0.9	1.3	0.3	0.1	0.1	86.3	2.5	11.2	0.065	0.503	32.239734	-115.063166
Estación Coahuila	34.50	1	0	7406	2.6	88.7	1.4	2.7	2.1	1.3	0.7	0.4	0.1	91.3	1.4	7.3	0.063	0.530	32.201439	-115.004407

BAJA CALIFORNIA

25 CARR: Ent. Santa Rosa - Ent. Pachuca

CLAVE: 02015

RUTA: BC-006

AÑO: 2025

LUGAR	ESTACION				CLASIFICACION VEHICULAR EN PORCIENTO										COORDENADAS					
	KM	TE	SC	TDPA	M	A	B	C2	C3	T3S2	T3S3	T3S2R4	OTROS	A	B	C	K'	D	LATITUD	LONGITUD
T. C. Sonoita - Mexicali	0.00	3	0	7338	1.7	90.8	1.1	3.4	0.8	0.9	0.6	0.6	0.1	92.5	1.1	6.4	0.084	0.516	32.558817	-115.019916
Paredones	10.90	3	0	7050	3.1	92.4	1.2	2.3	0.3	0.5	0.1	0.1	0.0	95.5	1.2	3.3	0.079	0.528	32.609527	-114.923478
Cd. Morelos	18.00	3	0	2585	2.5	83.4	1.7	7.0	2.5	2.2	0.2	0.4	0.1	85.9	1.7	12.4	0.080	0.573	32.647857	-114.802562
T. C. Mexicali - Algodones	23.22																			

26 CARR: La Puerta - T. C. (Mexicali - Estación Coahuila)

CLAVE: 02502

RUTA: BC-010

AÑO: 2025

LUGAR	ESTACION				CLASIFICACION VEHICULAR EN PORCIENTO										COORDENADAS					
	KM	TE	SC	TDPA	M	A	B	C2	C3	T3S2	T3S3	T3S2R4	OTROS	A	B	C	K'	D	LATITUD	LONGITUD
T. C. Mexicali - San Felipe	0.00																			
Zakamoto	4.60	1	0	3522	1.8	90.0	1.4	5.5	0.5	0.5	0.2	0.1	0.0	91.8	1.4	6.8	0.074	0.529	32.326956	-115.299039
Nayarit	9.00	3	0	4160	1.3	93.8	0.6	3.2	0.4	0.5	0.1	0.1	0.0	95.1	0.6	4.3	0.066	0.502	32.313195	-115.217007
T. C. Mexicali - Estación Coahuila	15.00																			

27 CARR: Mexicali - Algodones

CLAVE: 02012

RUTA: BC-002

AÑO: 2025

LUGAR	ESTACION				CLASIFICACION VEHICULAR EN PORCIENTO										COORDENADAS					
	KM	TE	SC	TDPA	M	A	B	C2	C3	T3S2	T3S3	T3S2R4	OTROS	A	B	C	K'	D	LATITUD	LONGITUD
T. C. Mexicali - San Felipe	0.00																			
Ejido Puebla	12.00	3	0	10124	2.7	82.2	2.2	5.1	2.7	2.0	1.3	1.2	0.6	84.9	2.2	12.9	0.074	0.631	32.557362	-115.359935
T. C. Geotérmica - Estación Delta	31.50	1	0	6559	1.2	92.1	1.0	3.7	0.9	0.8	0.2	0.1	0.0	93.3	1.0	5.7	0.082	0.644	32.426337	-115.263790
X. C. Mexicali - Estación Coahuila	37.70	1	0	4492	1.5	85.3	1.5	8.7	1.2	1.2	0.5	0.1	0.0	86.8	1.5	11.7	0.077	0.555	32.419132	-115.204742
X. C. Mexicali - Estación Coahuila	37.70	3	0	6508	2.4	82.8	1.7	9.5	0.8	1.1	0.9	0.7	0.1	85.2	1.7	13.1	0.069	0.623	32.419000	-115.174069
X. C. Ejido Monterrey - Mazón	49.65	1	0	7383	3.5	82.2	3.4	5.4	1.3	1.8	1.1	0.8	0.5	85.7	3.4	10.9	0.070	0.596	32.418478	-115.069540
X. C. Ejido Monterrey - Mazón	49.65	3	0	3463	1.9	86.5	2.3	5.0	1.8	1.6	0.4	0.3	0.2	88.4	2.3	9.3	0.119	0.518	32.418454	-115.065359
T. Izq. Tres de Marzo	60.50	1	0	1347	3.7	88.9	1.3	2.8	0.7	1.4	0.8	0.3	0.1	92.6	1.3	6.1	0.085	0.772	32.464788	-114.947767
X. C. Sonoita - Mexicali	72.00	1	0	1759	3.0	88.7	1.6	3.4	1.7	0.9	0.5	0.2	0.0	91.7	1.6	6.7	0.154	0.720	32.503933	-114.849188
X. C. Sonoita - Mexicali	72.00	3	0	4321	1.0	92.9	1.2	2.5	0.9	1.2	0.2	0.1	0.0	93.9	1.2	4.9	0.071	0.610	32.513175	-114.841760
Pachuca	83.00	1	0	4798	0.9	95.6	1.1	1.2	0.3	0.6	0.3	0.0	0.0	96.5	1.1	2.4	0.072	0.590	32.589487	-114.830636
Algodones	94.46	1	0	3295	2.9	93.6	0.3	1.7	0.6	0.6	0.2	0.1	0.0	96.5	0.3	3.2	0.097	0.772	32.702966	-114.731181

BAJA CALIFORNIA

28 CARR: Mexicali - Estación Coahuila

CLAVE: 02016

RUTA: BC-001

AÑO: 2025

LUGAR	ESTACION				CLASIFICACION VEHICULAR EN PORCIENTO													COORDENADAS		
	KM	TE	SC	TDPA	M	A	B	C2	C3	T3S2	T3S3	T3S2R4	OTROS	A	B	C	K'	D	LATITUD	LONGITUD
Mexicali	0.00	3	1	22604	3.5	90.8	0.5	3.2	0.6	0.4	0.2	0.6	0.2	94.3	0.5	5.2	0.079	0.661	32.652973	-115.390424
Mexicali	0.00	3	2	22914	3.3	90.4	0.7	3.5	0.4	0.6	0.3	0.7	0.1	93.7	0.7	5.6	0.104	0.661	32.653114	-115.390418
T. Izq. Aeropuerto	11.30	1	1	20239	2.9	86.9	0.8	4.0	1.8	2.9	0.3	0.3	0.1	89.8	0.8	9.4	0.088	0.515	32.652887	-115.370737
T. Izq. Aeropuerto	11.30	1	2	20000	2.8	86.4	1.3	4.4	1.4	2.8	0.2	0.5	0.2	89.2	1.3	9.5	0.092	0.515	32.653018	-115.370717
Islas Agrarias Grupo a	14.10	1	0	13573	2.9	89.4	0.9	2.3	1.6	1.5	0.5	0.5	0.4	92.3	0.9	6.8	0.074	0.535	32.614127	-115.342312
X. C. Sonoita - Mexicali	30.79	1	0	4712	1.3	81.7	1.5	9.9	1.2	3.1	0.4	0.6	0.3	83.0	1.5	15.5	0.092	0.627	32.556500	-115.214992
X. C. Sonoita - Mexicali	30.79	3	0	6836	1.8	88.6	1.4	3.1	1.0	2.3	0.7	0.6	0.5	90.4	1.4	8.2	0.075	0.556	32.549988	-115.215098
Ejido Nuevo León	46.83	1	0	6269	2.2	87.2	1.6	3.2	1.5	1.7	1.1	1.0	0.5	89.4	1.6	9.0	0.071	0.507	32.421308	-115.192517
Ejido Nuevo León	46.83	3	0	7391	2.4	87.5	1.7	3.3	2.2	1.5	0.6	0.7	0.1	89.9	1.7	8.4	0.067	0.565	32.397957	-115.194585
T. Der. La Puerta	60.26	1	0	4020	1.0	93.6	1.1	3.0	0.4	0.6	0.1	0.2	0.0	94.6	1.1	4.3	0.062	0.558	32.314597	-115.189536
X. C. El Faro - Estación Coahuila	71.30	1	0	2033	1.7	89.3	1.5	5.4	0.8	0.8	0.2	0.2	0.1	91.0	1.5	7.5	0.079	0.571	32.241099	-115.167489
T. Der. Leona Vicario	80.50	1	0	580	5.7	87.3	1.0	3.3	0.4	1.1	0.6	0.4	0.2	93.0	1.0	6.0	0.148	0.593	32.212320	-115.167459
Estación Coahuila	96.65	1	0	1058	2.3	91.2	0.5	4.4	0.5	0.7	0.2	0.1	0.1	93.5	0.5	6.0	0.078	0.634	32.184832	-115.013680

29 CARR: Mexicali - Progreso

CLAVE: 02507

RUTA: BC-005

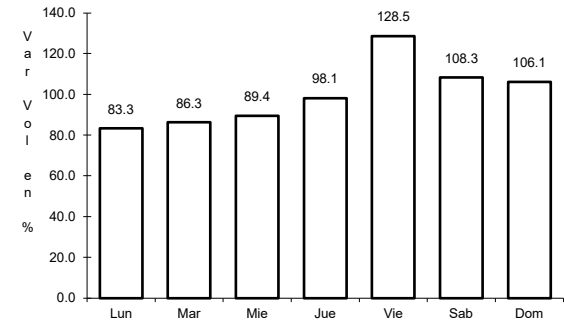
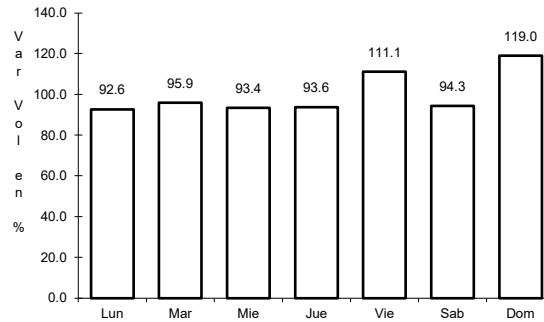
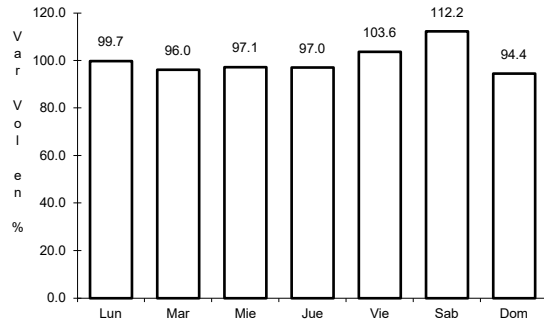
AÑO: 2025

LUGAR	ESTACION				CLASIFICACION VEHICULAR EN PORCIENTO													COORDENADAS		
	KM	TE	SC	TDPA	M	A	B	C2	C3	T3S2	T3S3	T3S2R4	OTROS	A	B	C	K'	D	LATITUD	LONGITUD
T. C. Mexicali - Tijuana	0.00																			
Progreso	15.30	1	0	12109	3.6	84.7	2.1	6.0	0.7	1.3	0.6	0.7	0.3	88.3	2.1	9.6	0.080	0.523	32.600845	-115.573743

1 CARR: Ensenada - El Chinero

CLAVE: 02009

ruta: MEX-003



Km: 0.00                      Tipo: 3                      Sent: 0

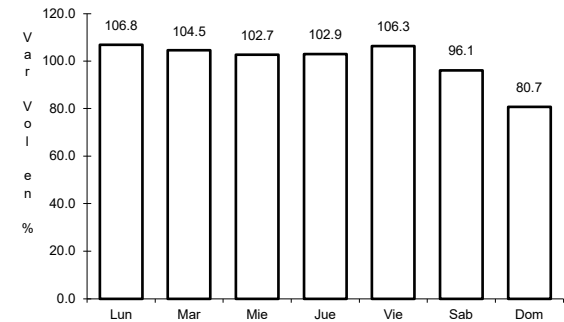
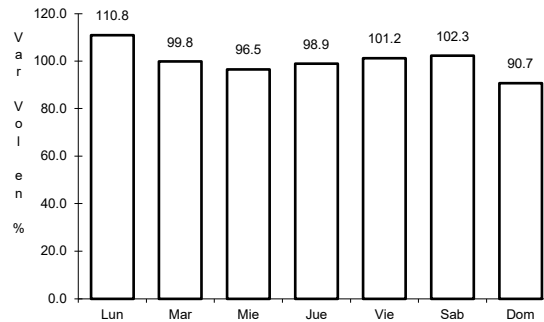
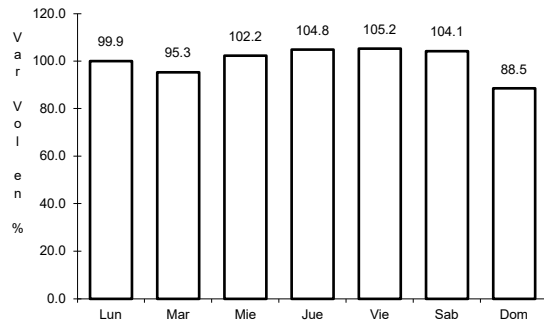
Km: 93.00                      Tipo: 3                      Sent: 0

Km: 196.00                      Tipo: 1                      Sent: 0

2 CARR: Ensenada - Lázaro Cárdenas

CLAVE: 02098

ruta: MEX-001



Km: 0.00                      Tipo: 3                      Sent: 1

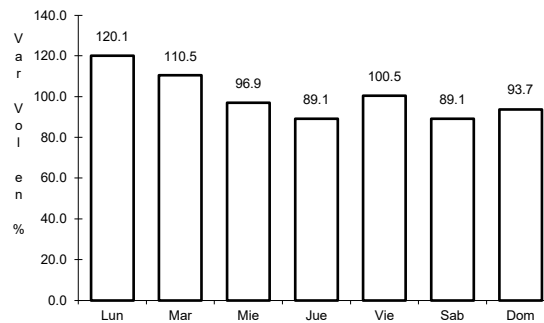
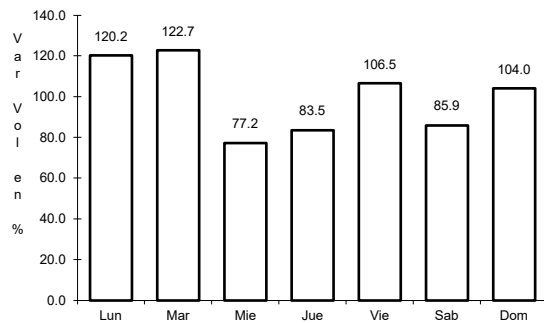
Km: 0.00                      Tipo: 3                      Sent: 2

Km: 172.40                      Tipo: 3                      Sent: 0

3 CARR: Ent. Punta Prieta - Bahía de Los Ángeles

CLAVE: 02322

ruta: MEX-001



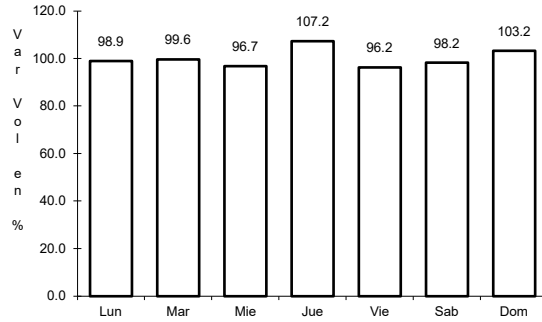
Km: 0.00                      Tipo: 3                      Sent: 0

Km: 68.00                      Tipo: 1                      Sent: 0

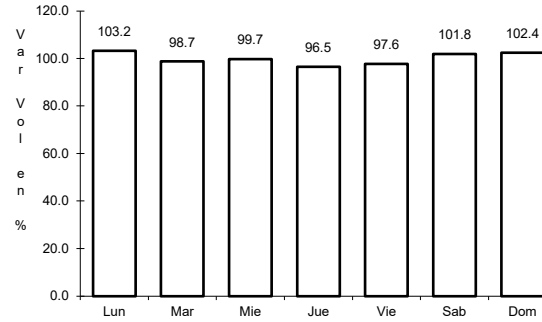
4 CARR: Ent. Punta Prieta - Guerrero Negro

CLAVE: 00321

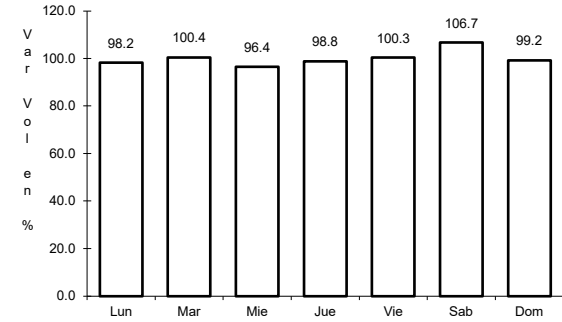
ruta: MEX-001



Km: 2.50      Tipo: 3      Sent: 0



Km: 68.85      Tipo: 3      Sent: 0

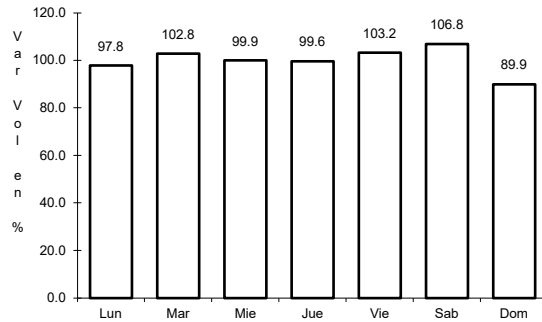


Km: 105.90      Tipo: 1      Sent: 0

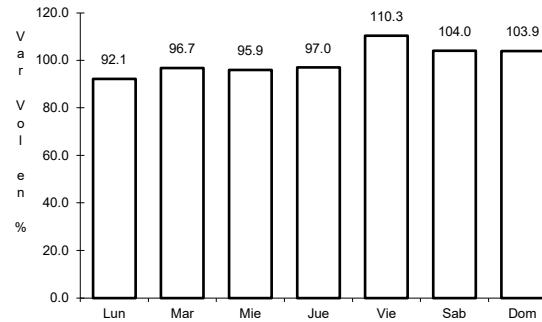
5 CARR: Lázaro Cárdenas - Ent. Punta Prieta

CLAVE: 02319

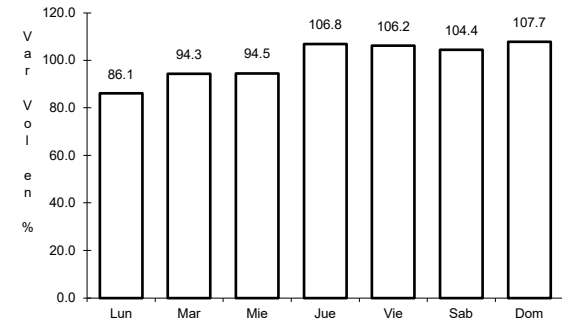
ruta: MEX-001



Km: 0.00      Tipo: 3      Sent: 0



Km: 140.00      Tipo: 1      Sent: 0

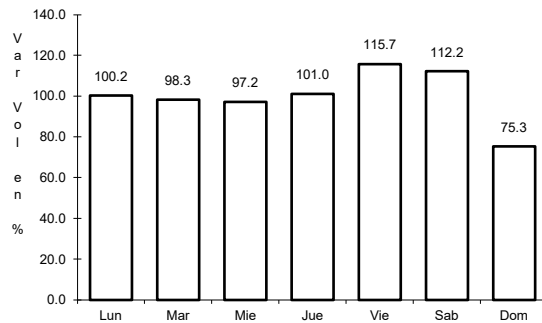


Km: 281.00      Tipo: 1      Sent: 0

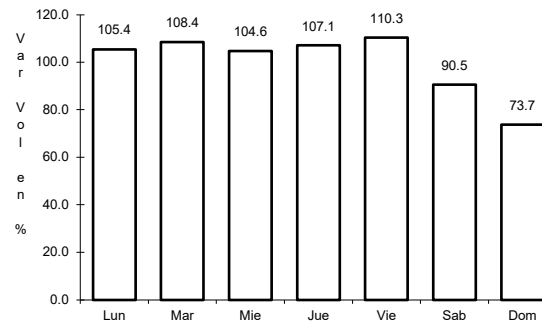
6 CARR: Mexicali - San Felipe

CLAVE: 02096

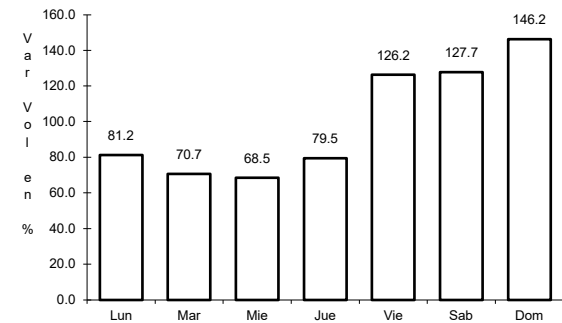
ruta: MEX-005



Km: 0.00      Tipo: 3      Sent: 1



Km: 0.00      Tipo: 3      Sent: 2

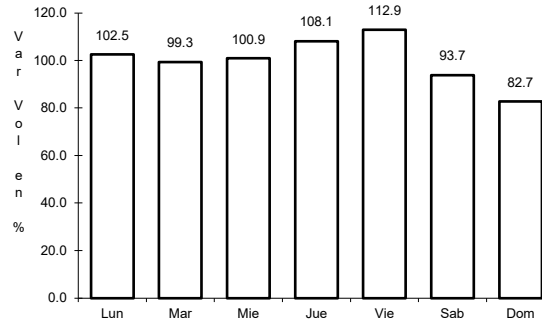
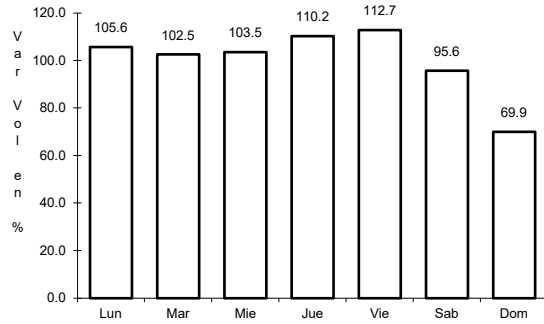


Km: 141.00      Tipo: 1      Sent: 0

7 CARR: Ramal a Aeropuerto de Mexicali

CLAVE: 02321

ruta: MEX-002



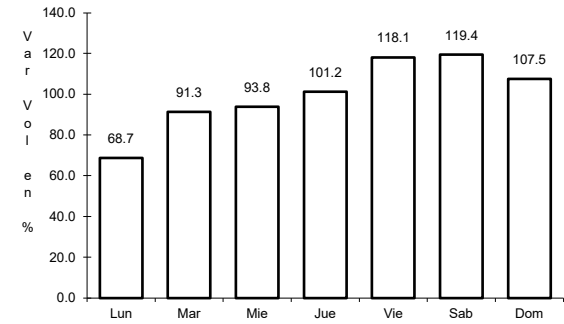
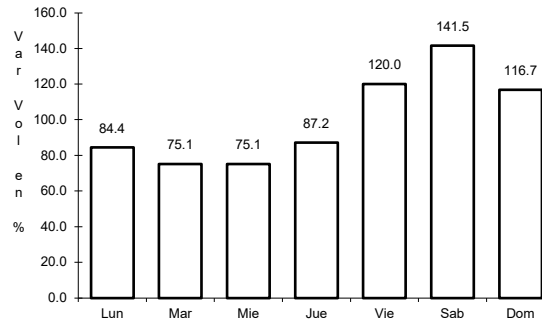
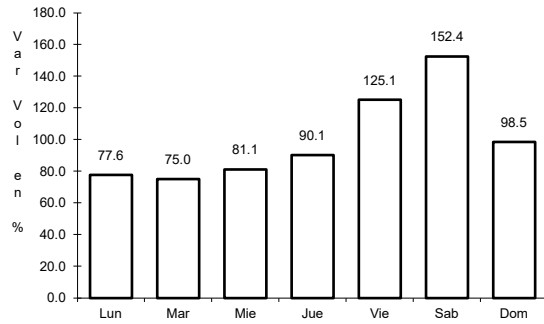
Km: 10.00      Tipo: 3      Sent: 0

Km: 19.80      Tipo: 1      Sent: 0

8 CARR: San Felipe - Chapala

CLAVE: 02503

ruta: MEX-005



Km: 0.00      Tipo: 3      Sent: 1

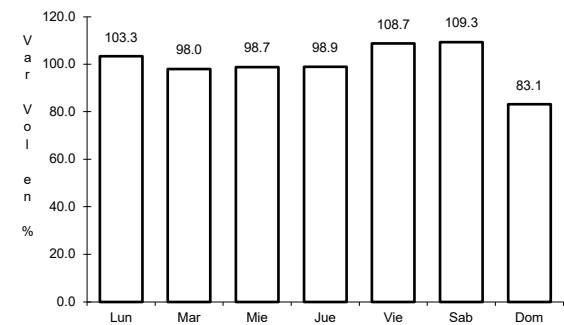
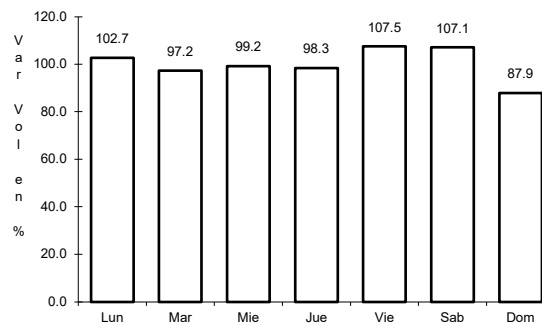
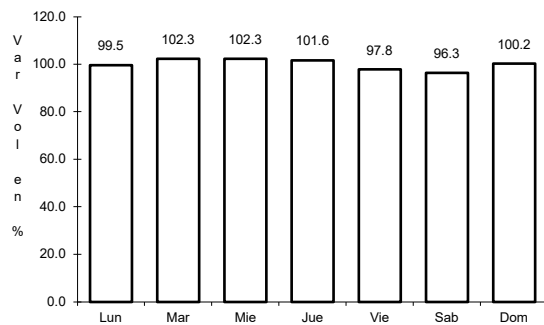
Km: 0.00      Tipo: 3      Sent: 2

Km: 75.46      Tipo: 3      Sent: 0

9 CARR: Sonoita - Mexicali

CLAVE: 00081

ruta: MEX-002



Km: 0.00      Tipo: 3      Sent: 0

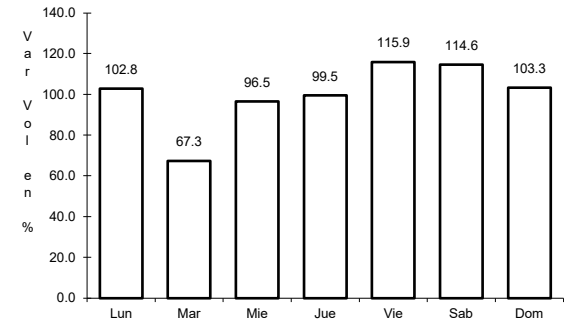
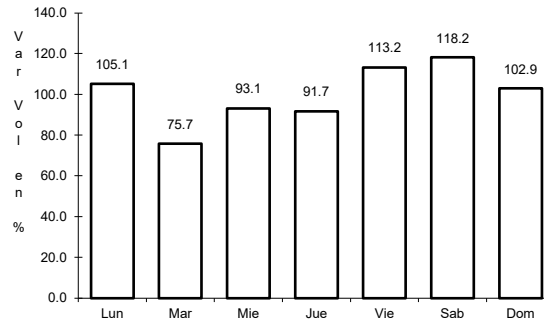
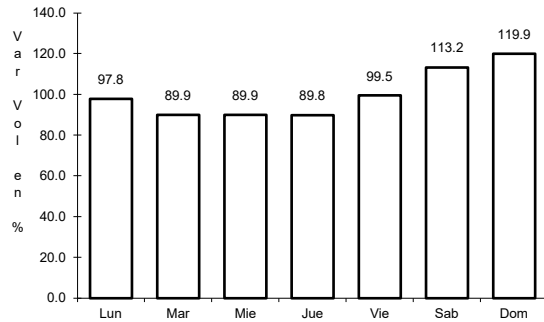
Km: 256.47      Tipo: 1      Sent: 1

Km: 256.47      Tipo: 1      Sent: 2

10 CARR: Tecate - El Sauzal

CLAVE: 02097

ruta: MEX-003



Km: 0.00                      Tipo: 3                      Sent: 0

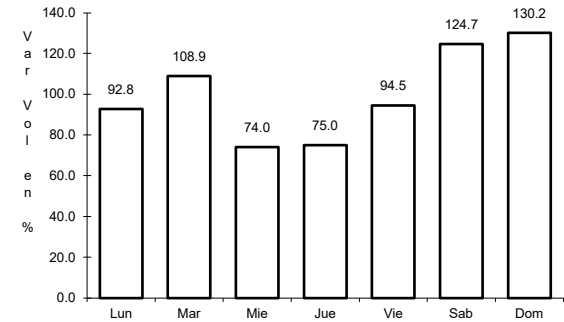
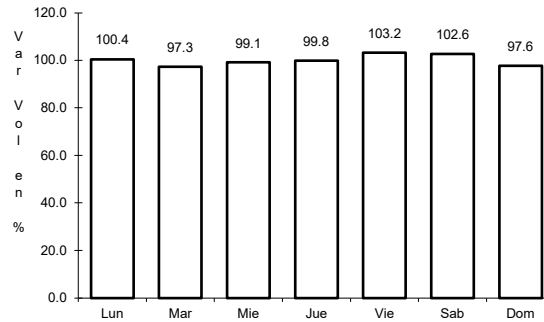
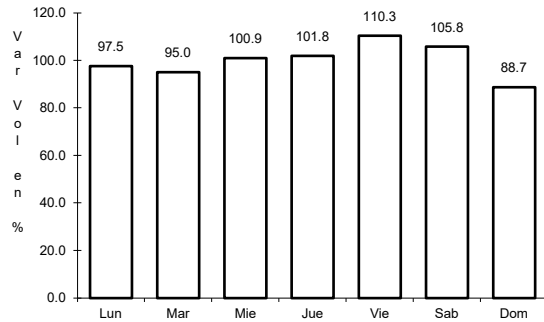
Km: 104.53                      Tipo: 1                      Sent: 1

Km: 104.53                      Tipo: 1                      Sent: 2

11 CARR: Tijuana - Ensenada (Libre)

CLAVE: 02099

ruta: MEX-001



Km: 22.00                      Tipo: 1                      Sent: 1

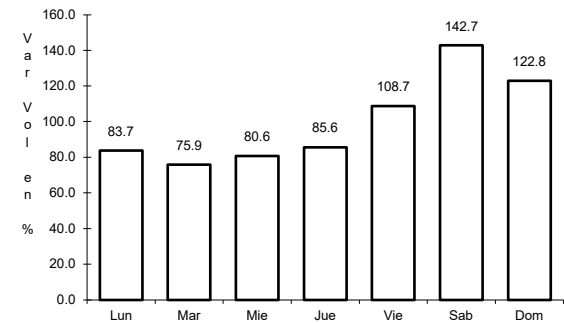
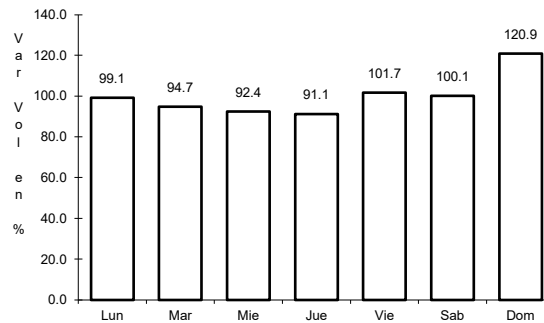
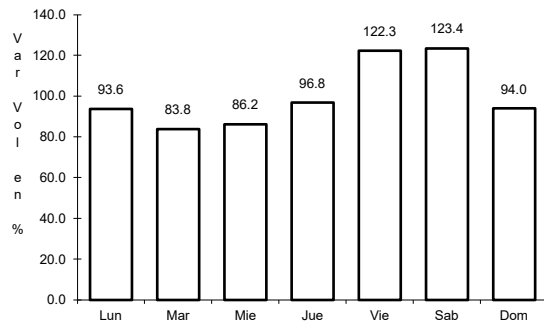
Km: 22.00                      Tipo: 1                      Sent: 2

Km: 56.98                      Tipo: 1                      Sent: 0

12 CARR: El Centinela - La Rumorosa (Cuota)

CLAVE: 02011

ruta: MEX-002D



Km: 25.00                      Tipo: 1                      Sent: 1

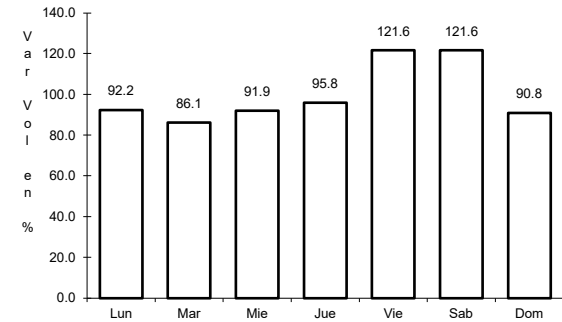
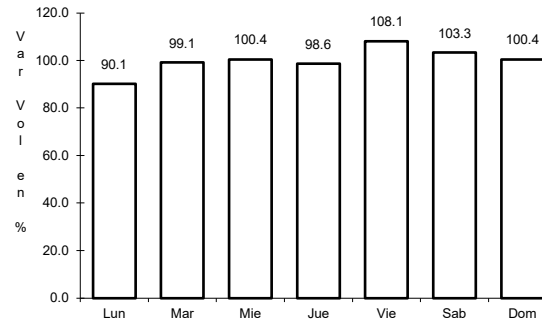
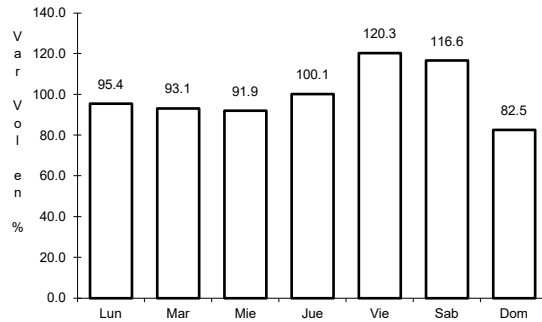
Km: 25.00                      Tipo: 1                      Sent: 2

Km: 67.60                      Tipo: 1                      Sent: 1

13 CARR: La Rumorosa - Tecate (Cuota)

CLAVE: 02011

ruta: MEX-002D



Km: 62.00

Tipo: 3

Sent: 1

Km: 62.00

Tipo: 3

Sent: 2

Km: 92.00

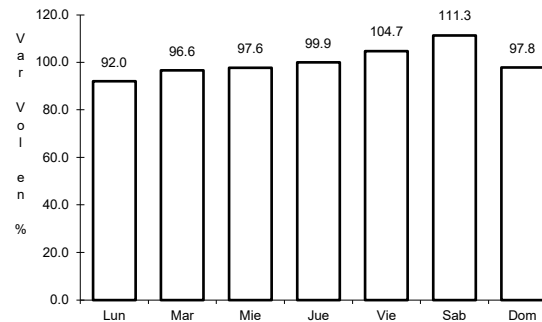
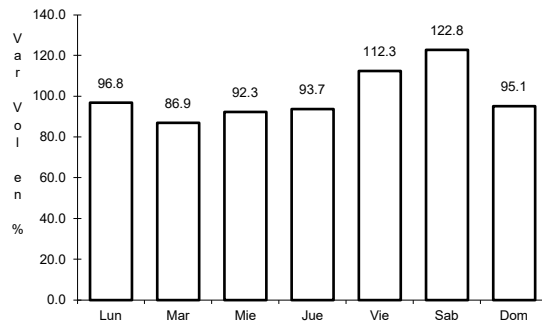
Tipo: 3

Sent: 1

14 CARR: Libramiento de Ensenada (Cuota)

CLAVE:

ruta: MEX-003D



Km: 0.00

Tipo: 3

Sent: 0

Km: 22.30

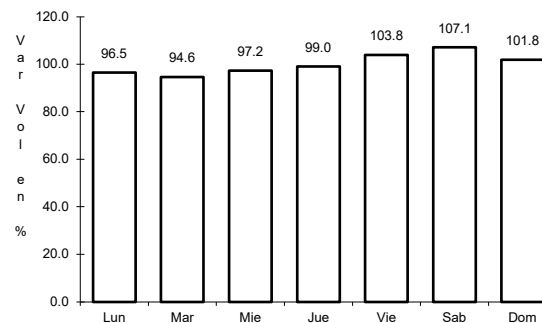
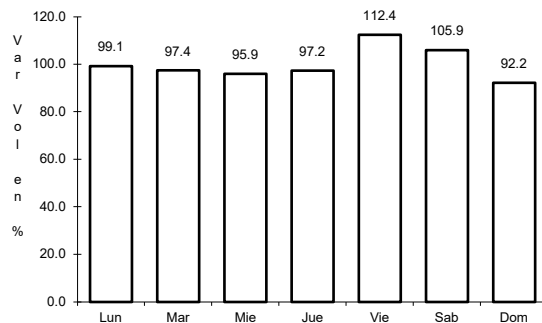
Tipo: 1

Sent: 0

15 CARR: Libramiento de Mexicali (Cuota)

CLAVE: 02319

ruta: MEX-002D



Km: 0.00

Tipo: 3

Sent: 0

Km: 40.60

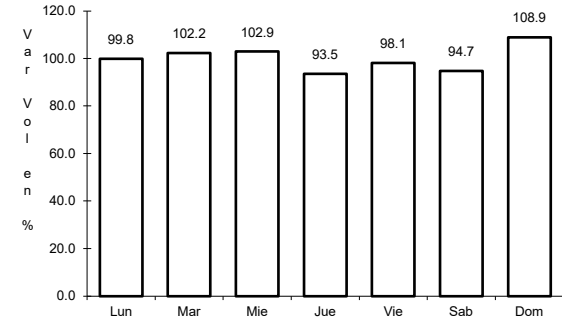
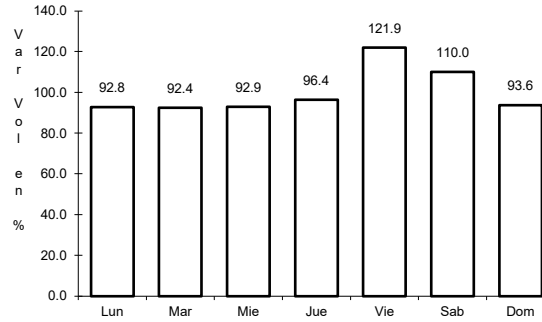
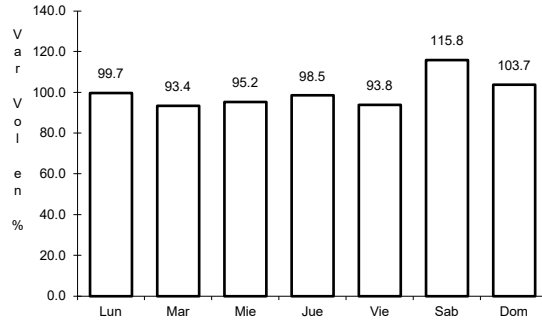
Tipo: 1

Sent: 0

16 CARR: Libramiento de Tecate (Cuota)

CLAVE: 02082

ruta: MEX-002D



Km: 118.00 Tipo: 3 Sent: 1

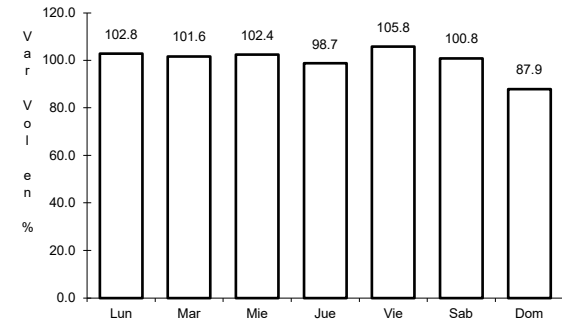
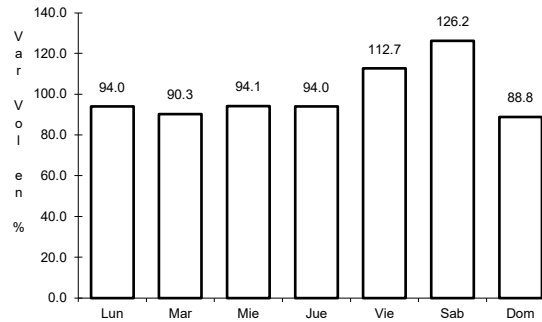
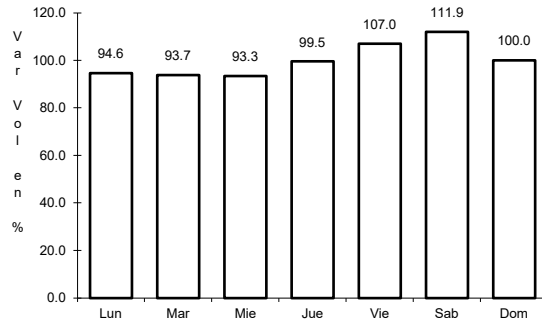
Km: 118.00 Tipo: 3 Sent: 2

Km: 122.85 Tipo: 3 Sent: 1

17 CARR: Tecate - Tijuana (Cuota)

CLAVE: 02011

ruta: MEX-002D



Km: 147.60 Tipo: 1 Sent: 1

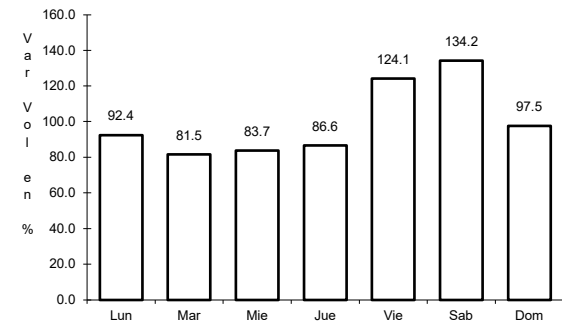
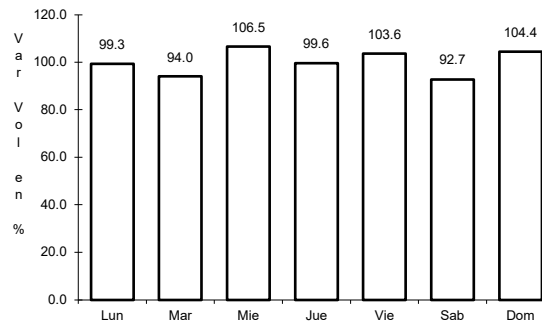
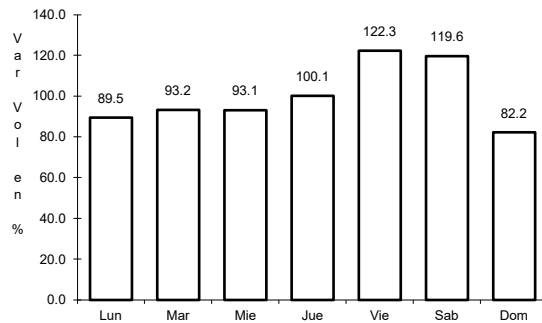
Km: 147.60 Tipo: 1 Sent: 2

Km: 147.60 Tipo: 3 Sent: 1

18 CARR: Tijuana - Ensenada (Cuota)

CLAVE: 02100

ruta: MEX-001D



Km: 7.50 Tipo: 3 Sent: 1

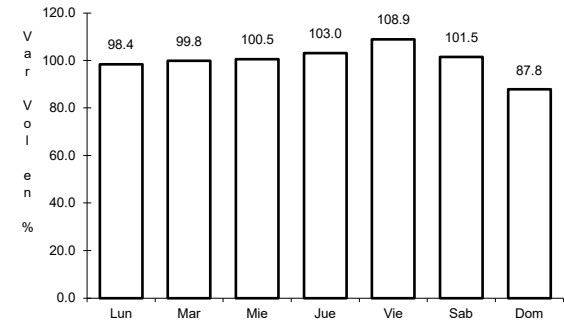
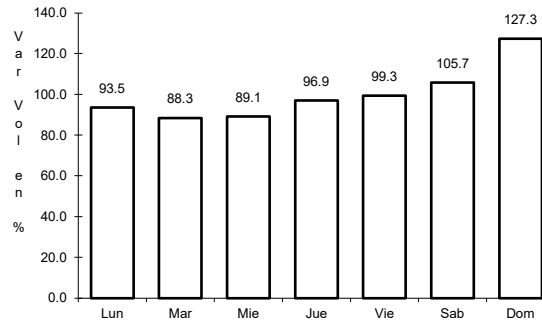
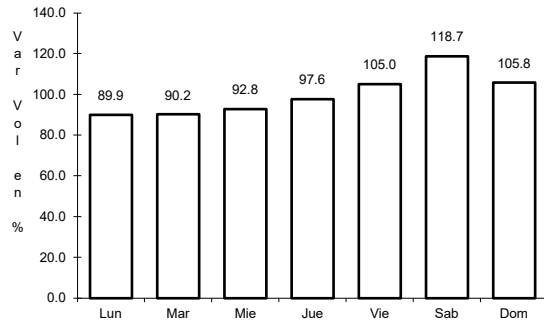
Km: 7.50 Tipo: 3 Sent: 2

Km: 77.60 Tipo: 3 Sent: 1

19 CARR: Mexicali - Tijuana

CLAVE: 02082

ruta: MEX-002D-MEX



Km: 7.80                      Tipo: 3                      Sent: 1

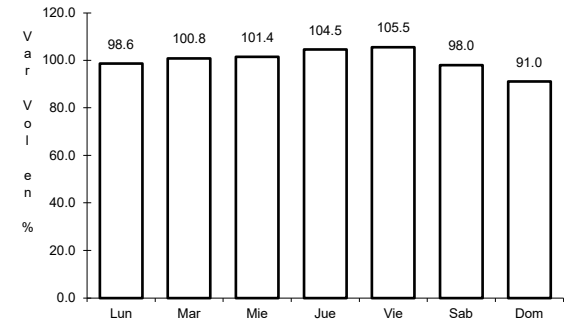
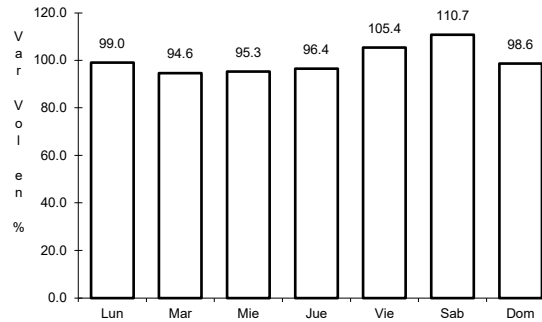
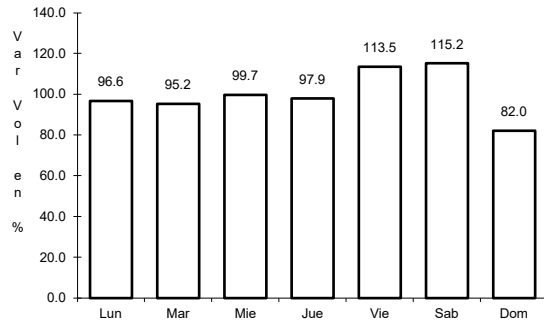
Km: 7.80                      Tipo: 3                      Sent: 2

Km: 165.00                      Tipo: 3                      Sent: 0

20 CARR: Algodones - Ent. Islas Agrarias Grupo B

CLAVE: 02006

ruta: BC-008



Km: 0.00                      Tipo: 3                      Sent: 0

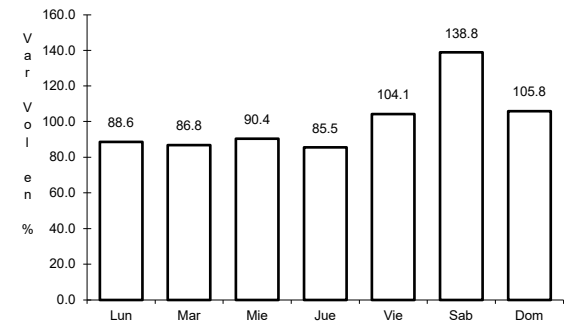
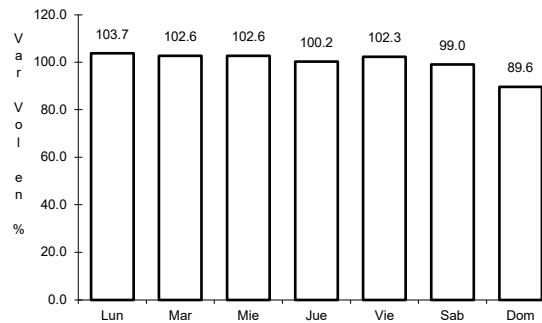
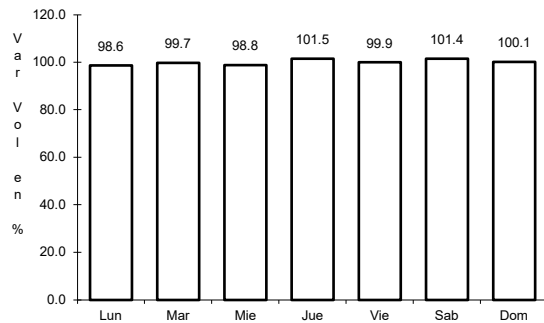
Km: 31.50                      Tipo: 1                      Sent: 0

Km: 55.50                      Tipo: 1                      Sent: 0

21 CARR: Corredor Tijuana 2000

CLAVE: 02006

ruta: BC



Km: 0.00                      Tipo: 3                      Sent: 1

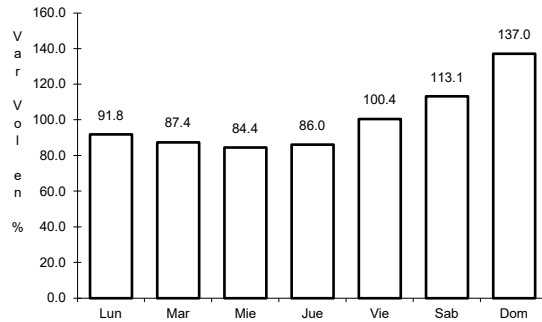
Km: 0.00                      Tipo: 3                      Sent: 2

Km: 40.00                      Tipo: 1                      Sent: 1

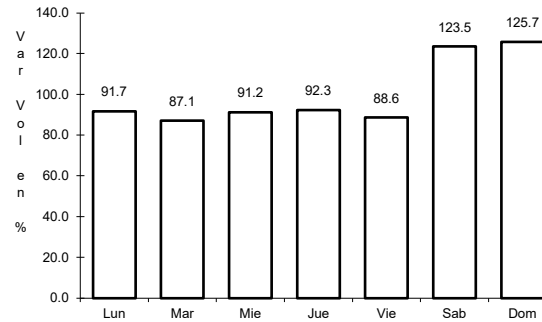
22 CARR: Ejido Benito Juárez - Ejido Chiapas

CLAVE: 02501

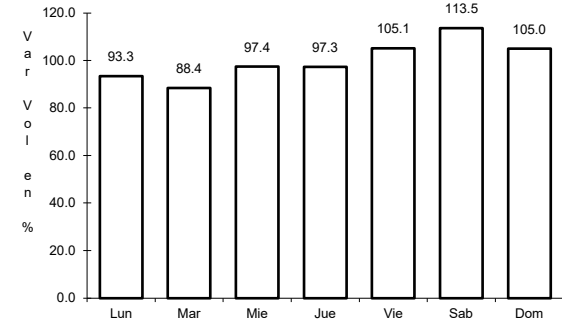
ruta: BC-061



Km: 0.00      Tipo: 3      Sent: 0



Km: 7.00      Tipo: 1      Sent: 0

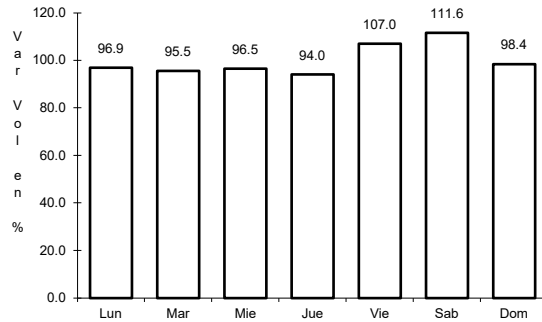


Km: 10.56      Tipo: 1      Sent: 0

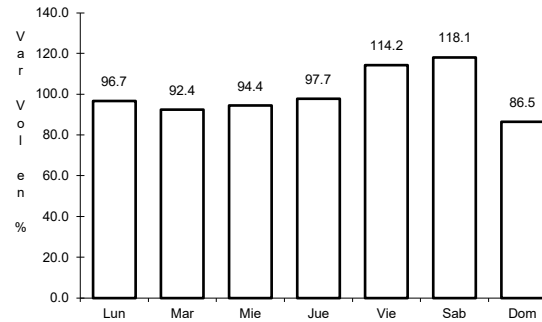
23 CARR: Ejido Monterrey - Mazón

CLAVE: 02004

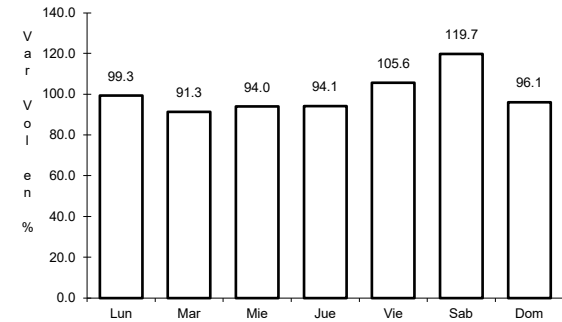
ruta: BC-003



Km: 0.00      Tipo: 3      Sent: 0



Km: 15.16      Tipo: 3      Sent: 0

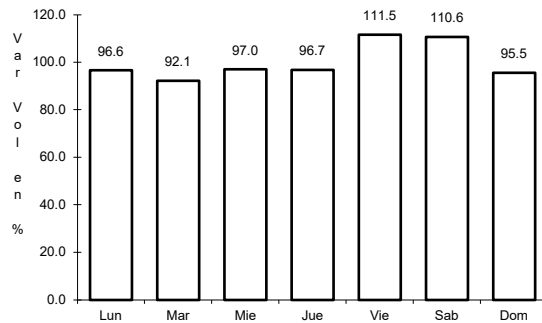


Km: 35.00      Tipo: 1      Sent: 0

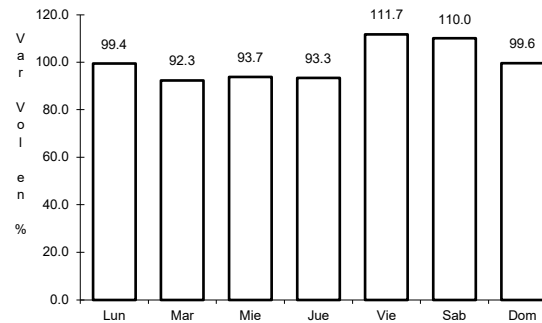
24 CARR: El Faro - Estación Coahuila

CLAVE: 02013

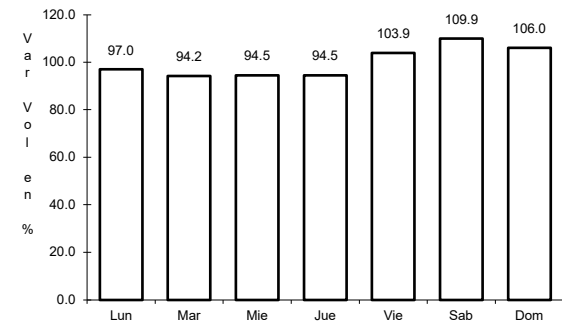
ruta: BC-004



Km: 0.00      Tipo: 3      Sent: 0



Km: 16.30      Tipo: 1      Sent: 0

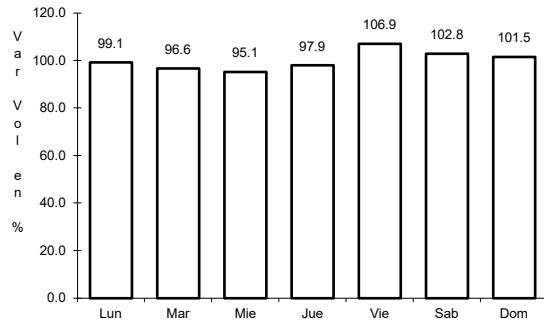


Km: 34.50      Tipo: 1      Sent: 0

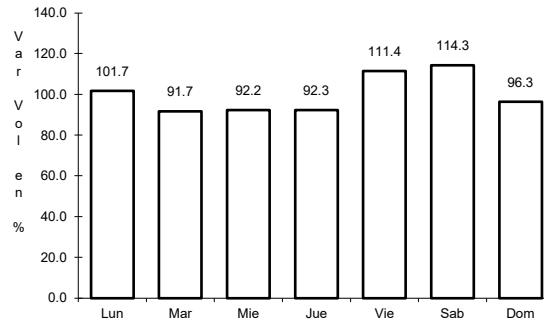
25 CARR: Ent. Santa Rosa - Ent. Pachuca

CLAVE: 02015

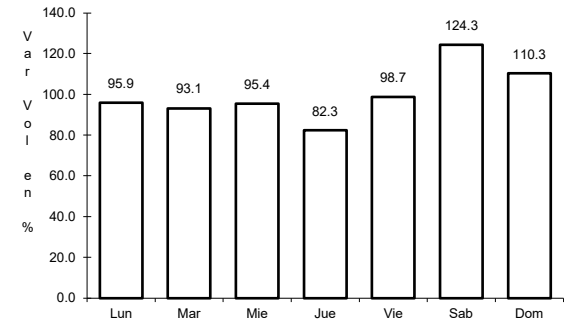
ruta: BC-006



Km: 0.00      Tipo: 3      Sent: 0



Km: 10.90      Tipo: 3      Sent: 0

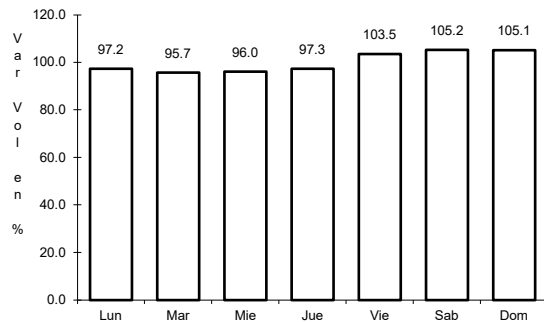


Km: 18.00      Tipo: 3      Sent: 0

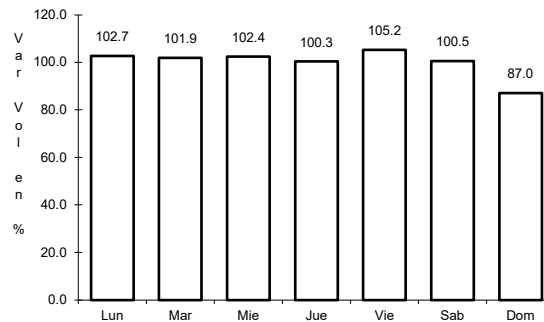
26 CARR: La Puerta - T. C. (Mexicali - Estación Coahuila)

CLAVE: 02502

ruta: BC-010



Km: 4.60      Tipo: 1      Sent: 0

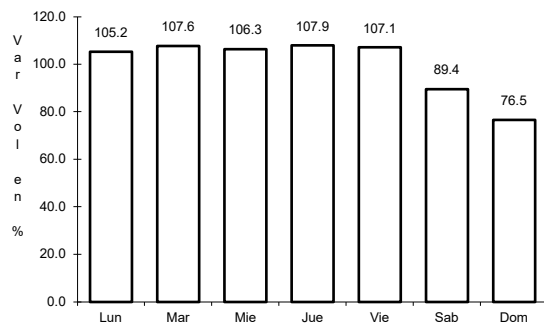


Km: 9.00      Tipo: 3      Sent: 0

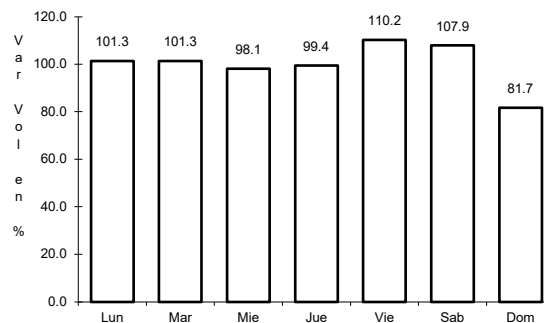
27 CARR: Mexicali - Algodones

CLAVE: 02012

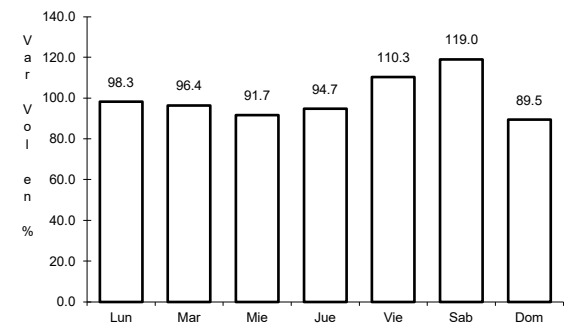
ruta: BC-002



Km: 12.00      Tipo: 3      Sent: 0



Km: 49.65      Tipo: 1      Sent: 0

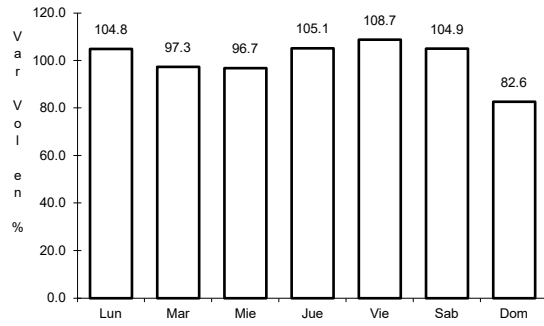


Km: 94.46      Tipo: 1      Sent: 0

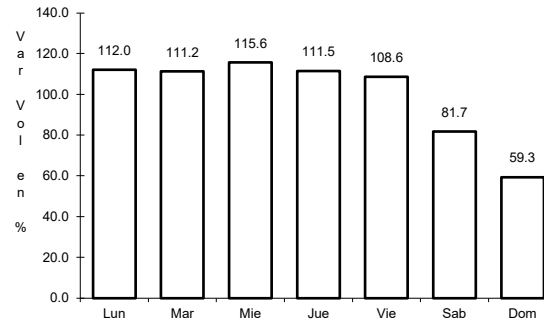
28 CARR: Mexicali - Estación Coahuila

CLAVE: 02016

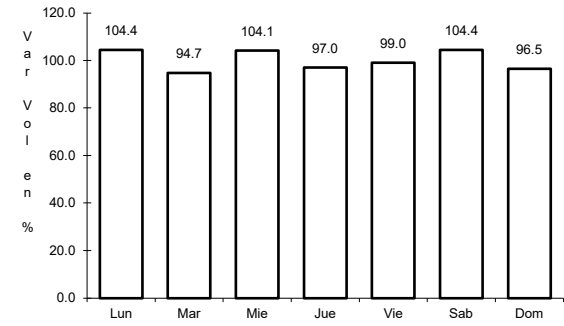
RUTA: BC-001



Km: 0.00                      Tipo: 3                      Sent: 1



Km: 0.00                      Tipo: 3                      Sent: 2

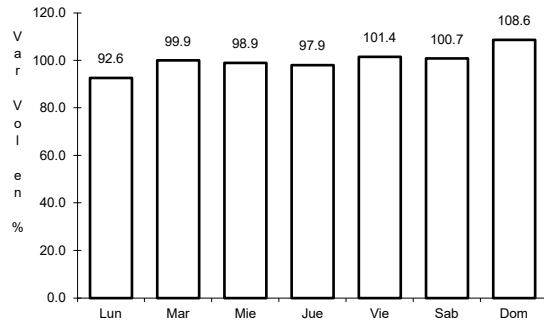


Km: 96.65                      Tipo: 1                      Sent: 0

29 CARR: Mexicali - Progreso

CLAVE: 02507

RUTA: BC-005



Km: 15.30                      Tipo: 1                      Sent: 0